



# Corporate Presentation

February 2025

**Advancing Cadillac Project:  
An Emerging Gold Camp East of Val-d'Or**





# CAUTIONARY STATEMENTS

## Forward-Looking Statement

- This presentation may contain forward-looking statements that reflect management's current expectations with regards to future events. Such forward-looking statements are subject to certain factors and involve a number of risks and uncertainties. Actual results may differ from expected results. Factors that could cause our results, our operations or future events to change materially compared to expectations expressed or implied by the forward-looking statements include, but are not limited to, volatility in the price of gold, risks inherent to the mining industry, uncertainty regarding mineral resource estimations, and additional funding requirements or the company's ability to obtain such funding.

## Scientific and Technical Content

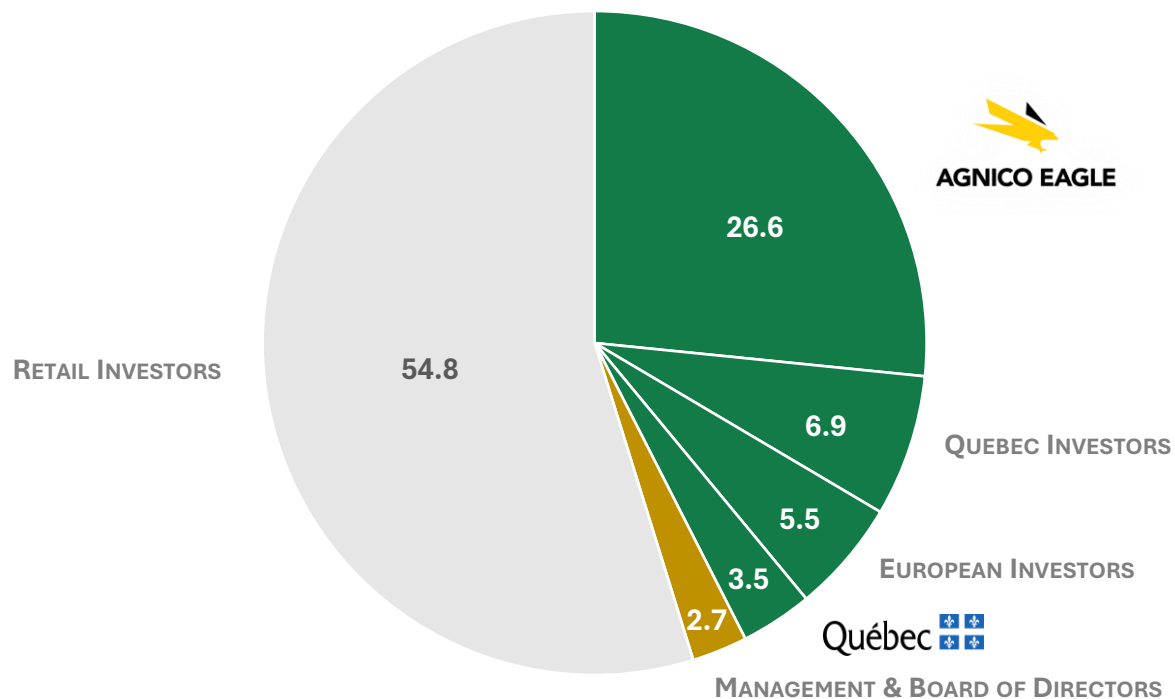
- The scientific and technical information in this presentation relating to the Chimo Mine project is supported by a technical report entitled "[NI 43-101 Technical Report and Preliminary Economic Assessment for Chimo Mine and West Nordeau Gold Deposits, Chimo Mine and East Cadillac Properties, Quebec, Canada](#)" and dated May 29, 2023, which was prepared by InnovExplo Inc. (Marc R. Beauvais, P. Eng.), with contributions from several independent consulting firms, including Bumigeme (Florent Baril) and Responsible Mining Solutions (Eric Sellars). An electronic copy of the report is available on SEDAR+ ([www.sedarplus.ca](http://www.sedarplus.ca)) and on Cartier Resources website (<https://ressourcescartier.com/projects/chimo-mine/>).
- The scientific and technical information relating to the Benoist project is supported by a technical report entitled "[NI 43-101 Technical Report and Mineral Resource Estimate for the Benoist Property, Quebec, Canada](#)" and dated December 16, 2020, which was prepared by InnovExplo Inc. (Christine Beausoleil, P. Geo. And Claude Savard, P. Geo.). An electronic copy of the report is available on SEDAR+ ([www.sedarplus.ca](http://www.sedarplus.ca)) and on Cartier Resources website (<https://ressourcescartier.com/projects/benoist/>).

## Qualified Person

- The scientific and technical content of this presentation has been prepared, reviewed and approved by Ronan Déroff, P. Geo., M. Sc., Senior Geologist, Project Manager and Geomatician, who is a "Qualified Person" as defined by National Instrument 43-101 – Standards of Disclosure for Mineral Projects ("NI 43-101").



## SHAREHOLDER OWNERSHIP (%)



## KEY FINANCIALS

<b>Share Price</b> (February 18 <sup>th</sup> , 2025)	<b>0.13 \$CA / share</b>
<b>Shares Outstanding</b>	<b>364.6 million</b>
<b>Market Capitalization</b>	<b>47.4 \$CA million</b>
<hr/>	
<b>NPV/shares issued</b>	<b>1.06 \$CA</b>



# EXPERIENCED MANAGEMENT TEAM & BOARD OF DIRECTORS



**PHILIPPE CLOUTIER**  
P.GEO.

**Founder, President,  
CEO & Director**



**NANCY LACOURSIÈRE**  
B.ADM.

**Chief Financial Officer**



**RONAN DÉROFF**  
P.GEO., M.Sc.

**Senior Geologist,  
Project Manager & Geomatician**



**DANIEL MASSÉ**  
B.Sc., ADM.A. PL.FIN.

**Chairman  
of the Board**



**MARIO JACOB**  
LL.B, ASC

**President  
Compensation Committee**



**MYRZAH TAVARES BELLO**  
M.Sc., M. Env, IAS.A.

**President  
Gouvernance Committee**



**ALAIN LAPLANTE**  
FCPA, IAS.S

**President  
Audit Committee**



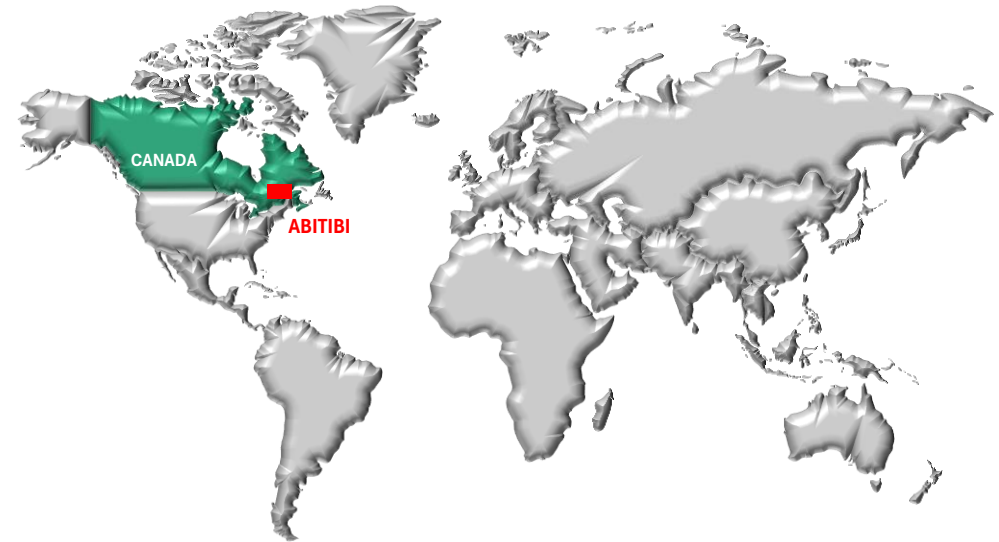
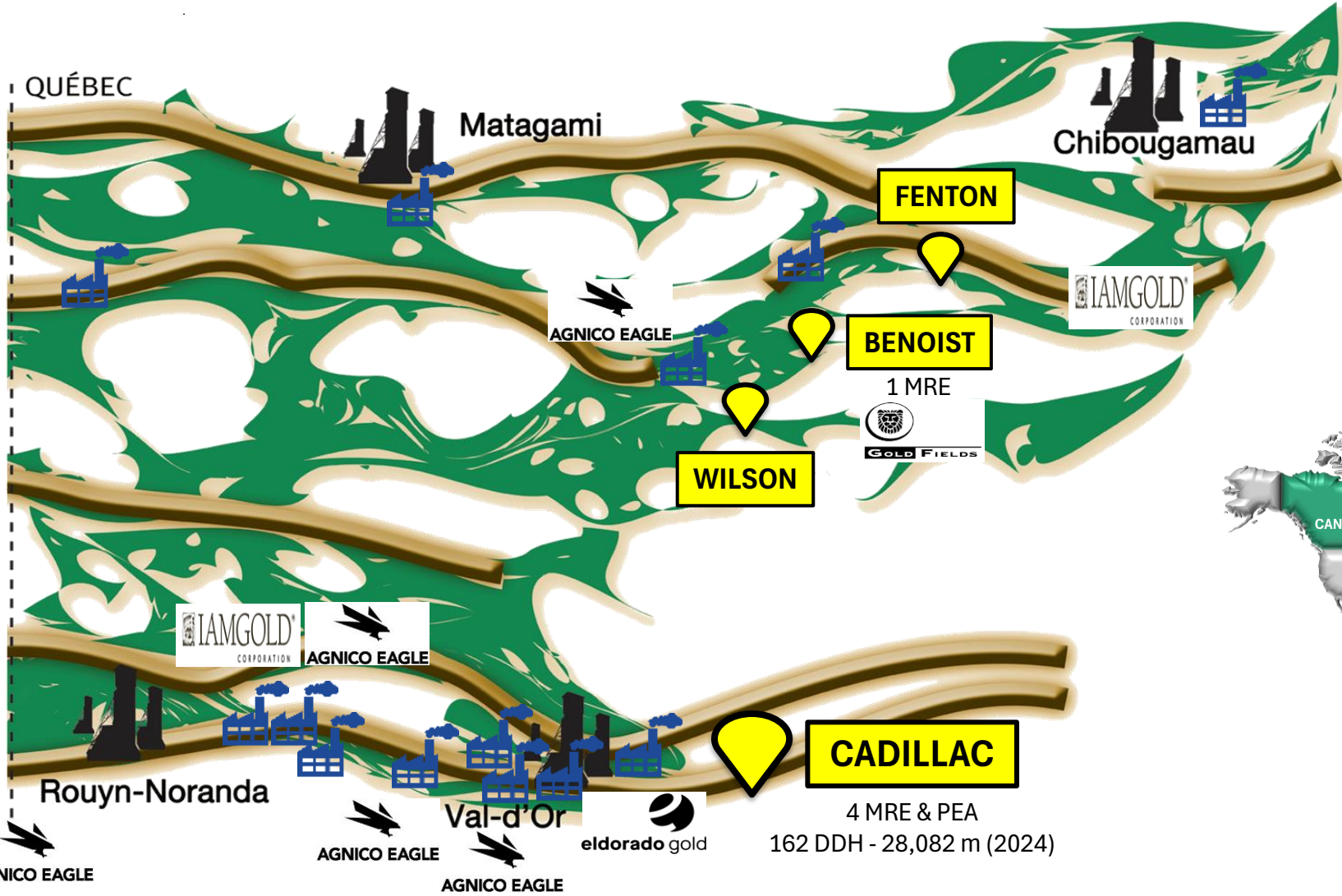
**MANUEL PEIFFER**  
B FINANCE

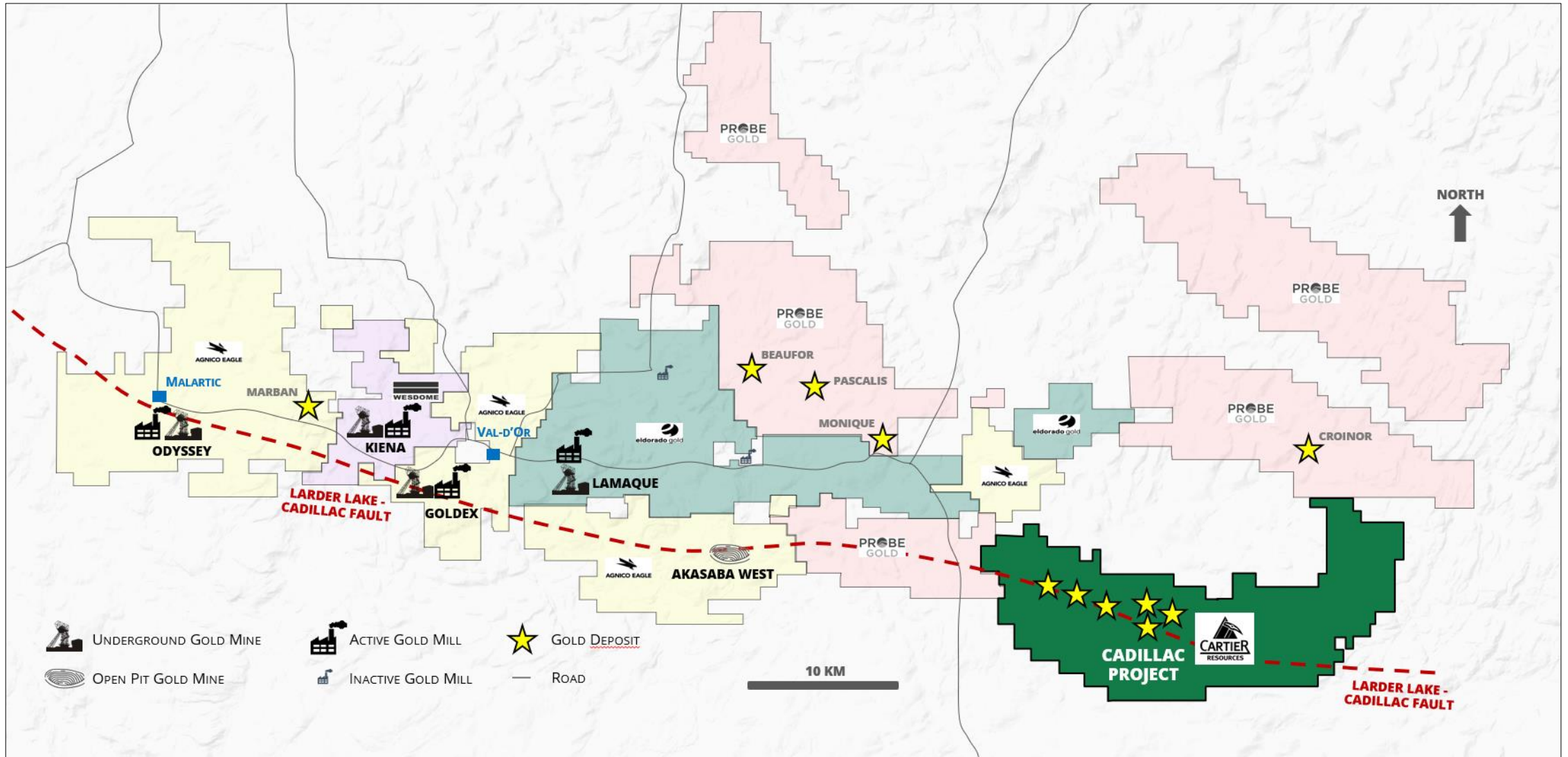
**Director,  
Europe Representative**





# ABITIBI GREENSTONE BELT (QUEBEC) > CARTIER PROJECTS







1

## Project Advantages

- Located in a low-risk mining-friendly region (Quebec)
- Key infrastructure present: power line, shaft, tailings management facility, etc.
- ~25,000 ha of land package
- Proximity of labor pool and suppliers

2

## Successful 2024 Drill Program

- 10 new high-grade gold zones discovered over 10 km
- 100,000 m drill program planning underway to pursue exploration of the strong potential
- Various options generating numerous exploration opportunities to discover one or more gold systems

3

## 2023 Preliminary Economic Assessment (PEA)<sup>1</sup>

- Gold price = 1,750 \$US / oz
- Post-Tax NPV5% C\$ 388 M, IRR 20.8%
- Production of 116,900 oz Au / year over 9.7 years
- Capex = C\$ 341 M

4

## 2022 Mineral Resource Estimate (MRE)<sup>1</sup>

- Gold price = 1,612 \$US / oz
- 7.1 Mt at 3.1 g/t Au for 720,000 oz of gold in the indicated category
- 18.5 Mt at 2.8 g/t Au for 1,633,000 oz of gold in the inferred category
- Last 2 DDH programs not included (~52,000 m)

1. Refer to the full text of the Cadillac Project PEA technical report for the assumptions, qualifications and limitations relating to disclosure.



## ACQUISITIONS

 CHIMO MINE

 EAST CADILLAC

## DRILL PROGRAMS

(177 DDH – 82,474 M)

DDH 2024 (162DDH – 28,082 M)

## NI 43-101 (4 MRE + 1 PEA)

MRE1 – 461,280 oz Au (ind.) + 417,250 oz Au (inf.)

MRE2 – 585,190 oz Au (ind.) + 597,800 oz Au (inf.)

MRE3 – 684,000 oz Au (ind.) + 1,358,000 oz Au (inf.)

MRE4<sup>1</sup> – 720,000 oz Au (ind.) + 1,633,000 oz Au (inf.)

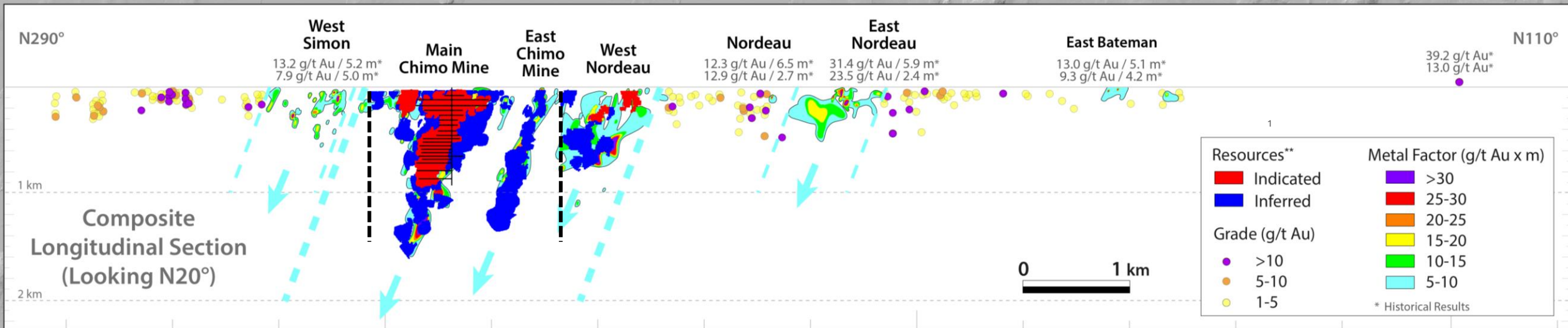
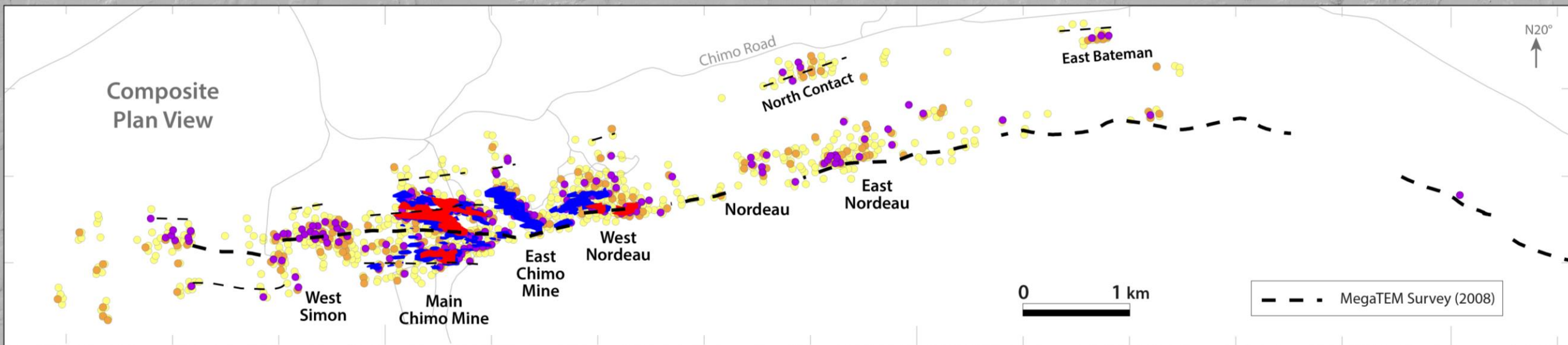
PEA<sup>1</sup> – @ 1,750 USD/oz: Post-Tax NPV<sub>5%</sub> C\$ 388 M, IRR 20.8 %

1. Refer to the full text of the Cadillac Project PEA technical report for the assumptions, qualifications and limitations relating to disclosure.





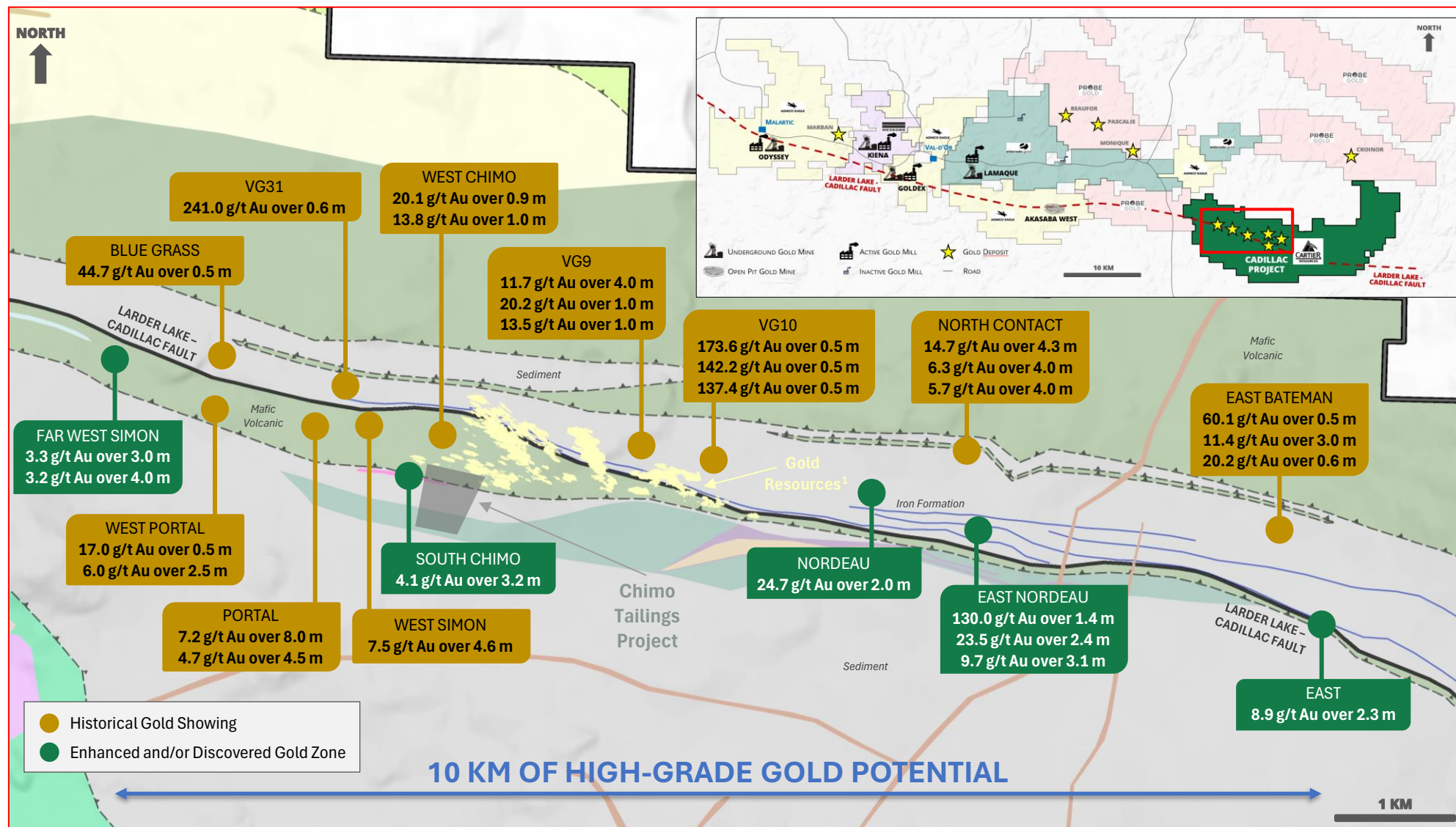
# CADILLAC > REGIONAL DDH COMPILATION



1. Refer to the full text of the Cadillac Project PEA technical report for the assumptions, qualifications and limitations relating to disclosure.



# CADILLAC > BEST RESULTS OF 2024 DDH PROGRAM



1. Refer to the full text of the Cadillac Project PEA technical report for the assumptions, qualifications and limitations relating to disclosure. The lengths of the mineralized intersections are expressed as lengths measured along the drill core.



# CADILLAC > GENERATING VALUE BY CHIMO TAILINGS PROJECT



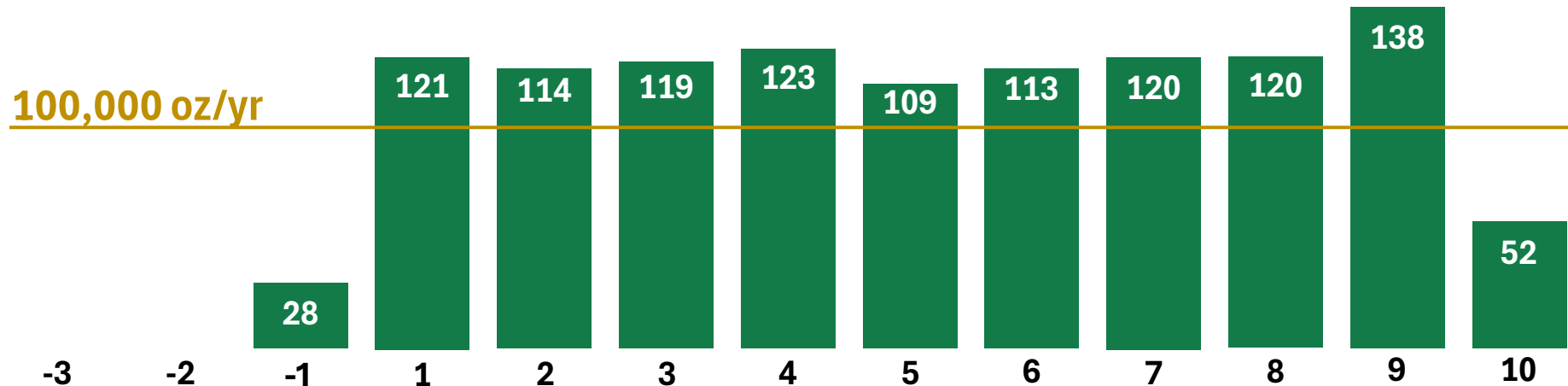


# CADILLAC > RESULTS OF PRELIMINARY ECONOMIC ASSESSMENT<sup>1</sup> (2023)

## HIGHLIGHTS

<b>MINE LIFE</b>	<b>MINE/FEED GRADE</b>	<b>MINE/MILL TONNAGE</b>	<b>GOLD PRODUCTION</b>	<b>TOTAL GOLD PRODUCED</b>
10 Yrs	2.7/4.6 g/t Au	4,500/2,400 tpd	116,900 oz/yr	1.2 Moz
<b>CAPEX</b>	<b>NPV5%   IRR</b> (US\$1,750/oz Au, after-tax)	<b>PAYBACK</b>	<b>AISC</b>	<b>OPERATING COST</b>
C\$ 341 M	C\$ 388 M   21%	2.9 Yrs	US\$755/oz Au	C\$ 107/t milled

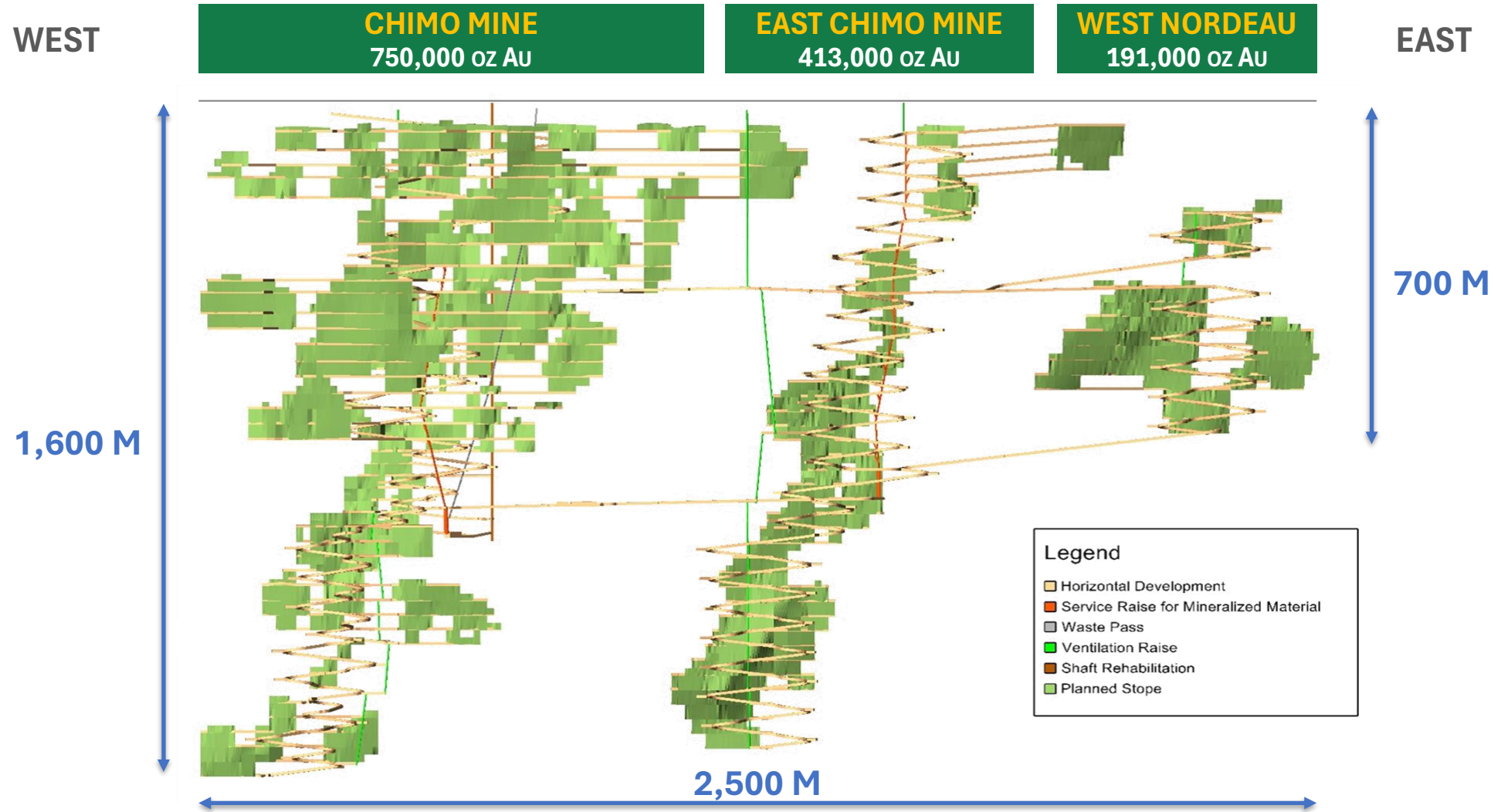
## PRODUCTION PROFILE (KOZ/YR)



1. Refer to the full text of the Cadillac Project PEA technical report for the assumptions, qualifications and limitations relating to disclosure.



# CADILLAC > LONGITUDINAL SECTION OF MINE DESIGN<sup>1</sup>



1. Refer to the full text of the Cadillac Project PEA technical report for the assumptions, qualifications and limitations relating to disclosure.

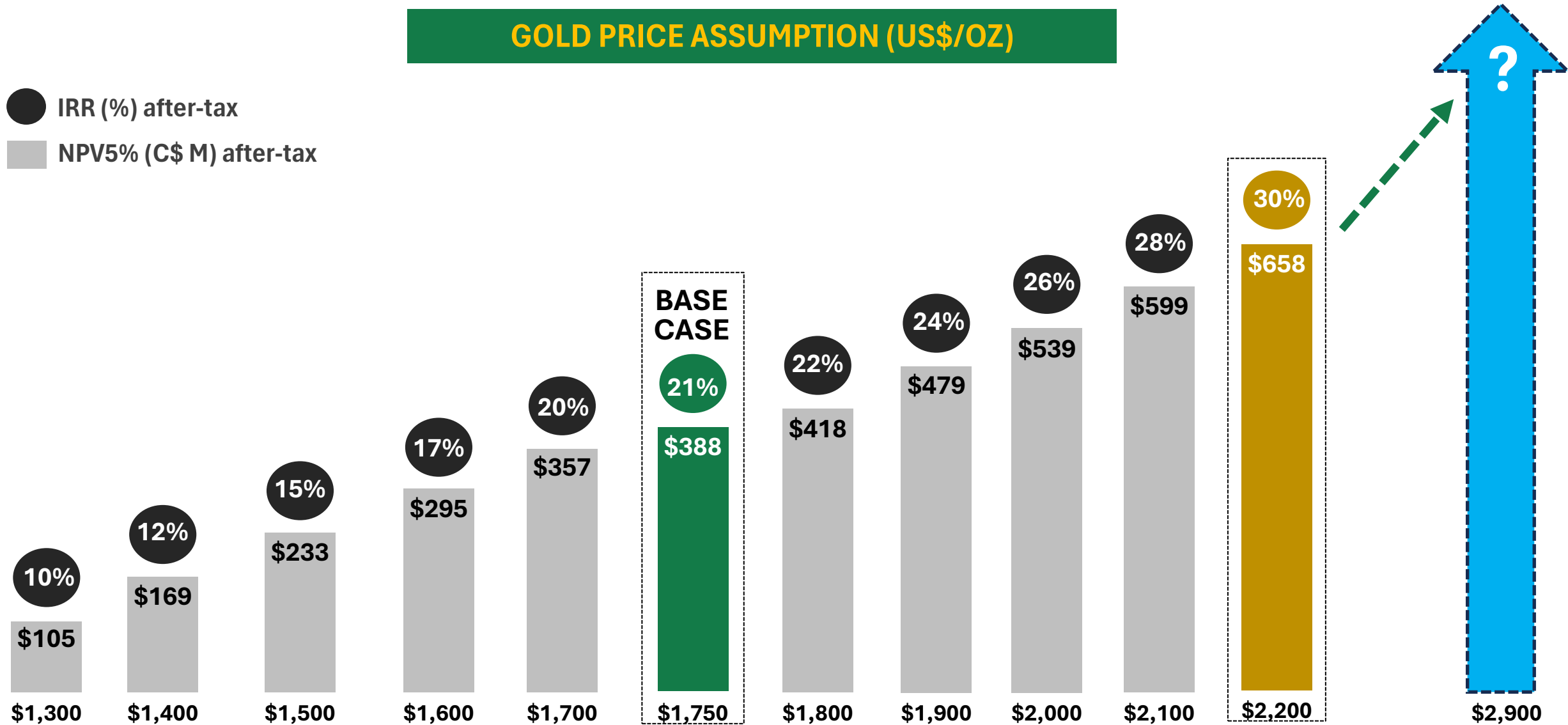


# CADILLAC > GOLD PRICE SENSITIVITY<sup>1</sup>



## GOLD PRICE ASSUMPTION (US\$/OZ)

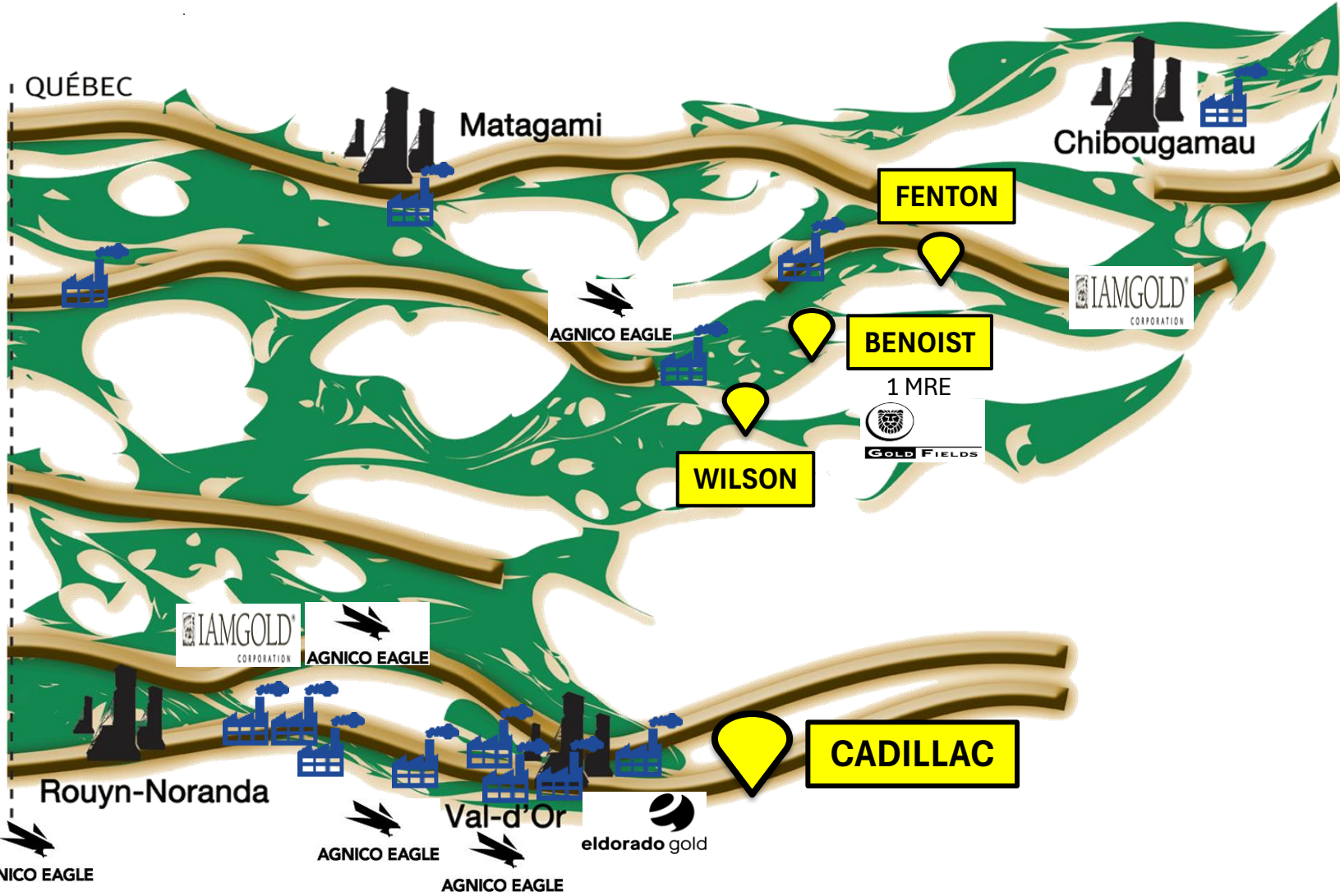
● IRR (%) after-tax  
 ■ NPV5% (C\$ M) after-tax

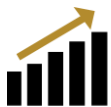


1. Refer to the full text of the Cadillac Project PEA technical report for the assumptions, qualifications and limitations relating to disclosure.



# ADDITIONAL HIGH-GRADE GOLD ASSETS: WILSON, FENTON & BENOIST





# WILSON > SEEKING PARTNER OR SALE

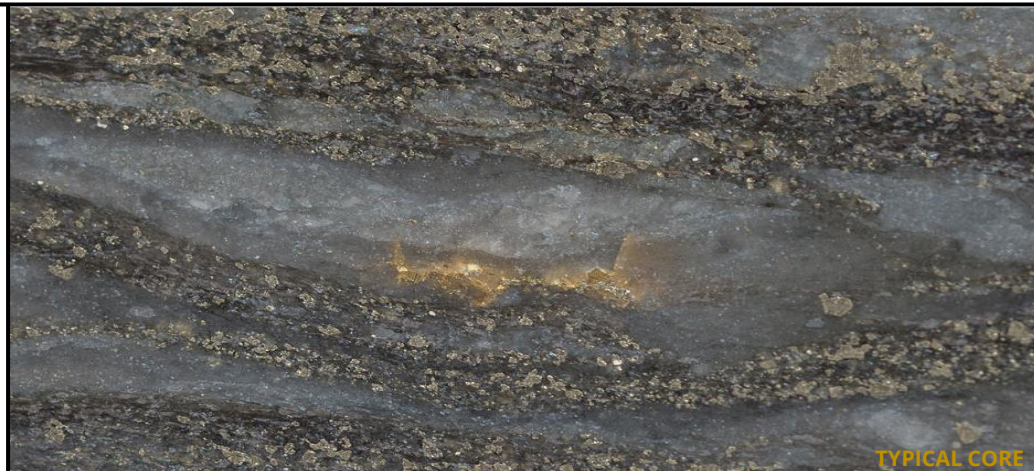
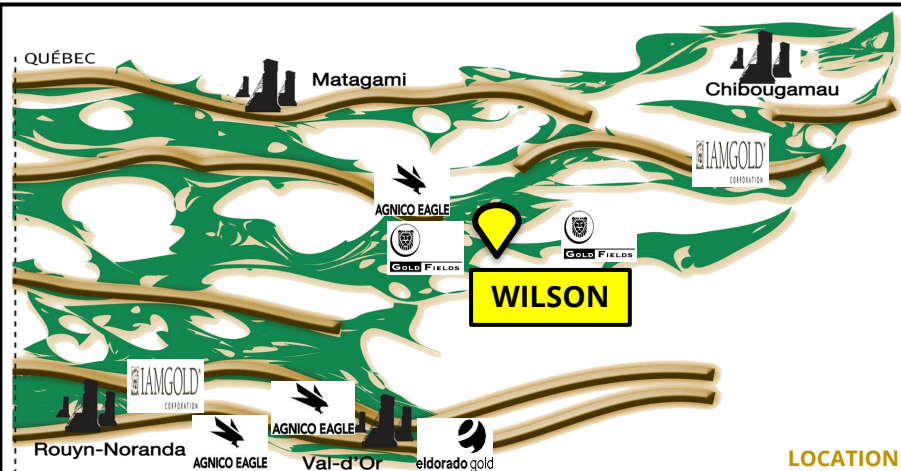


100 %  
ECR

42  
CLAIMS

1,750  
HA

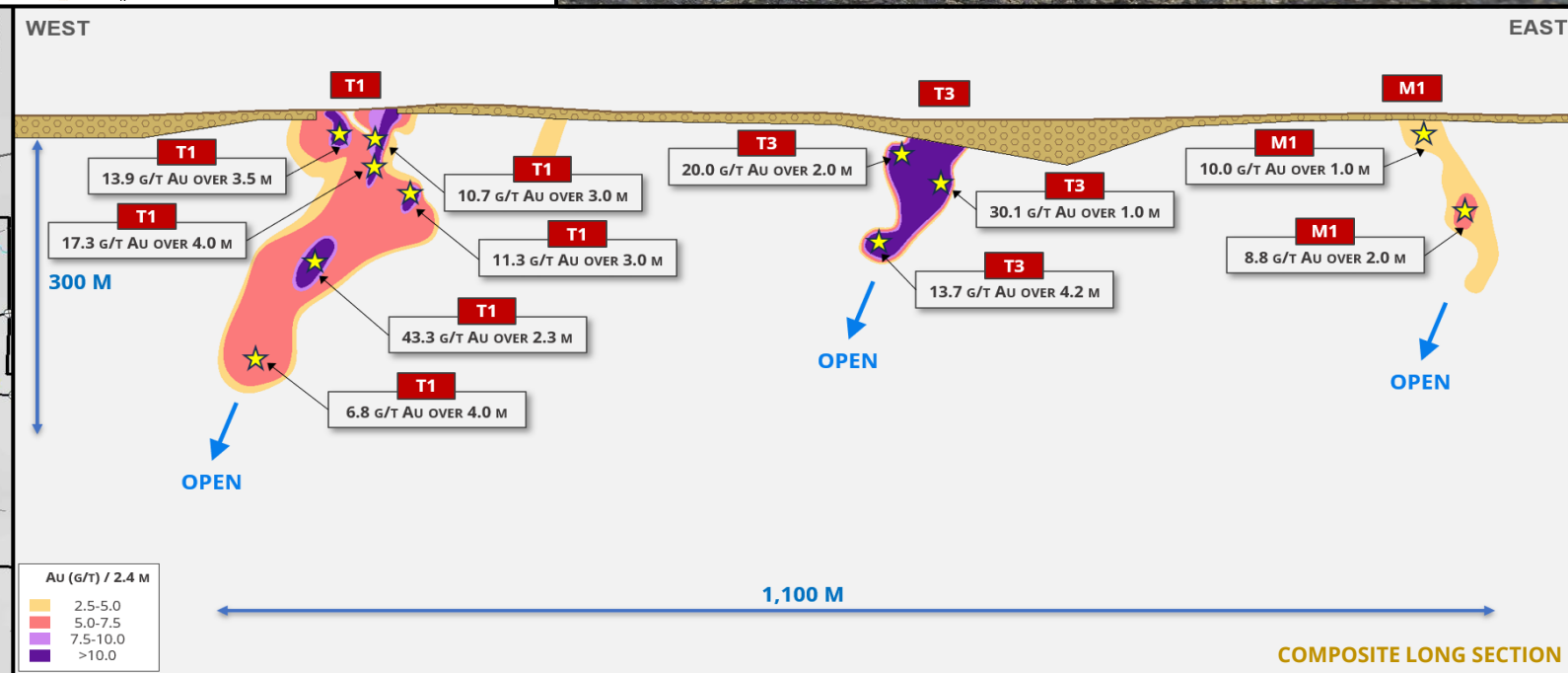
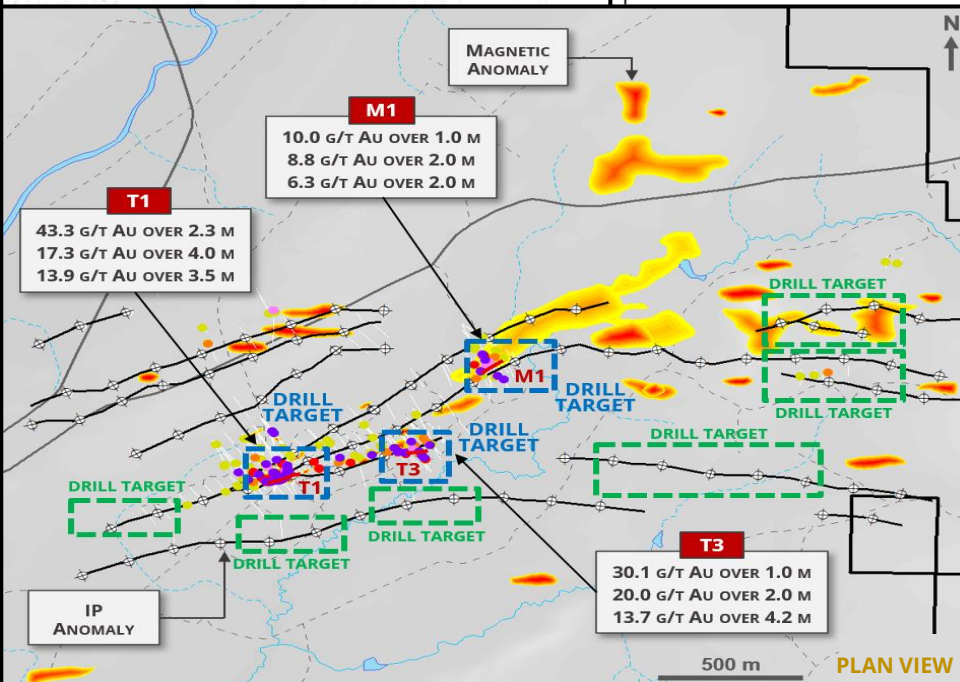
3  
GOLD ZONES



HIGHLIGHTS

LOCATION

TYPICAL CORE



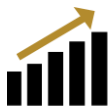
COMPOSITE LONG SECTION

The lengths of the historical mineralized intersections are expressed as lengths measured along the drill core.



TSXV: ECR | FSE: 6CA  
ressourcescartier.com





# FENTON > SEEKING PARTNER OR SALE

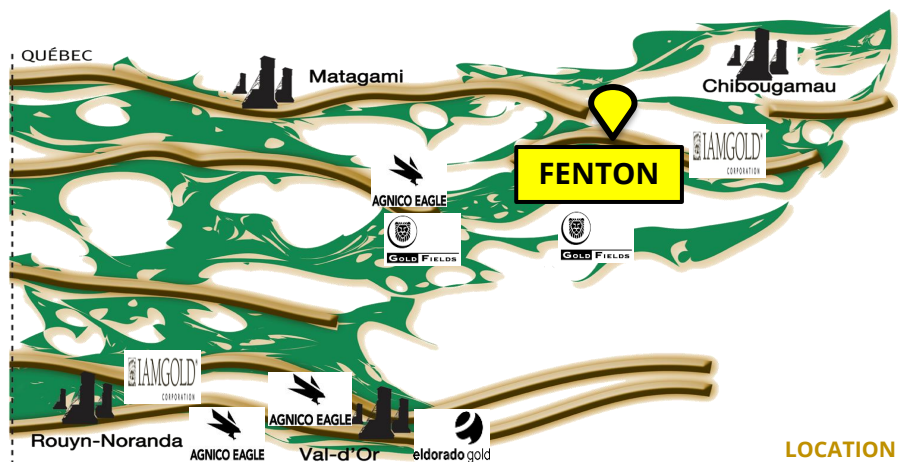


100 % ECR

18 CLAIMS

671 HA

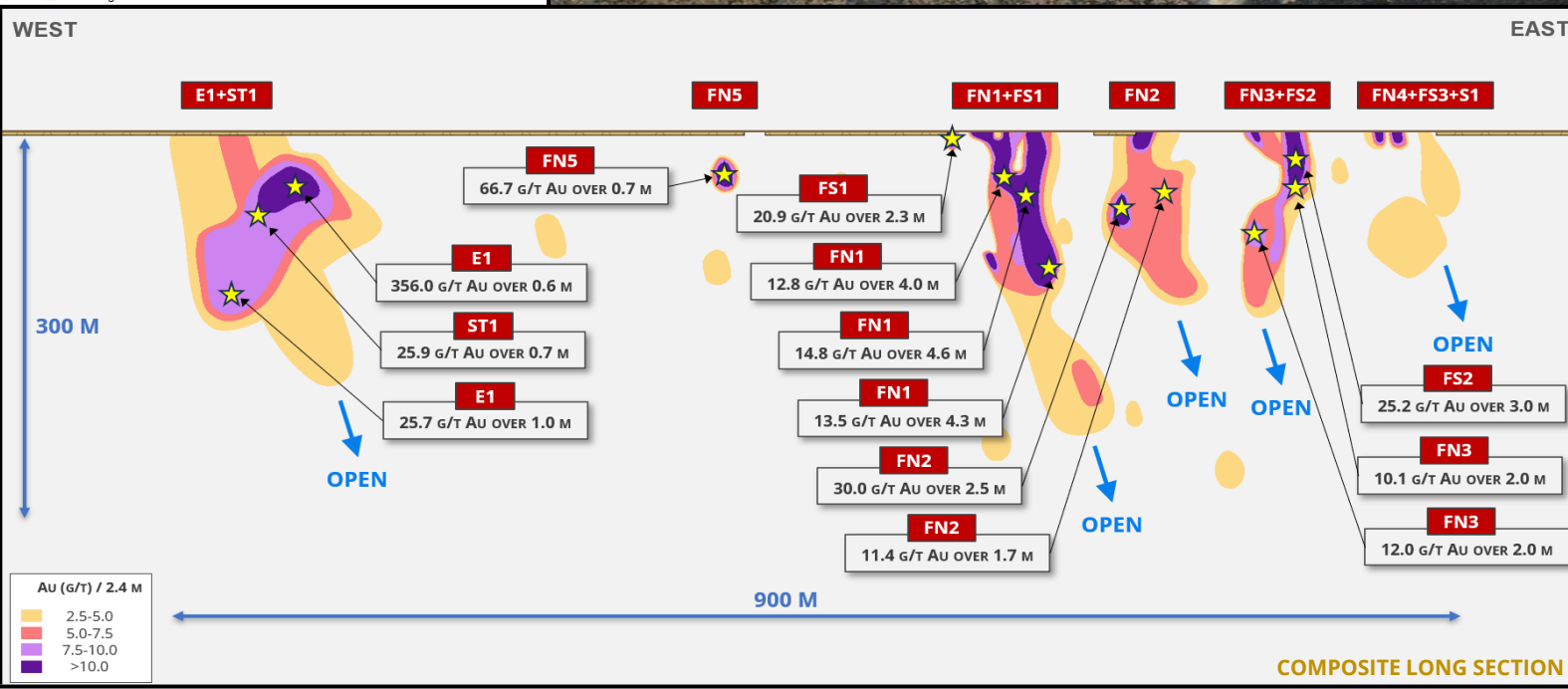
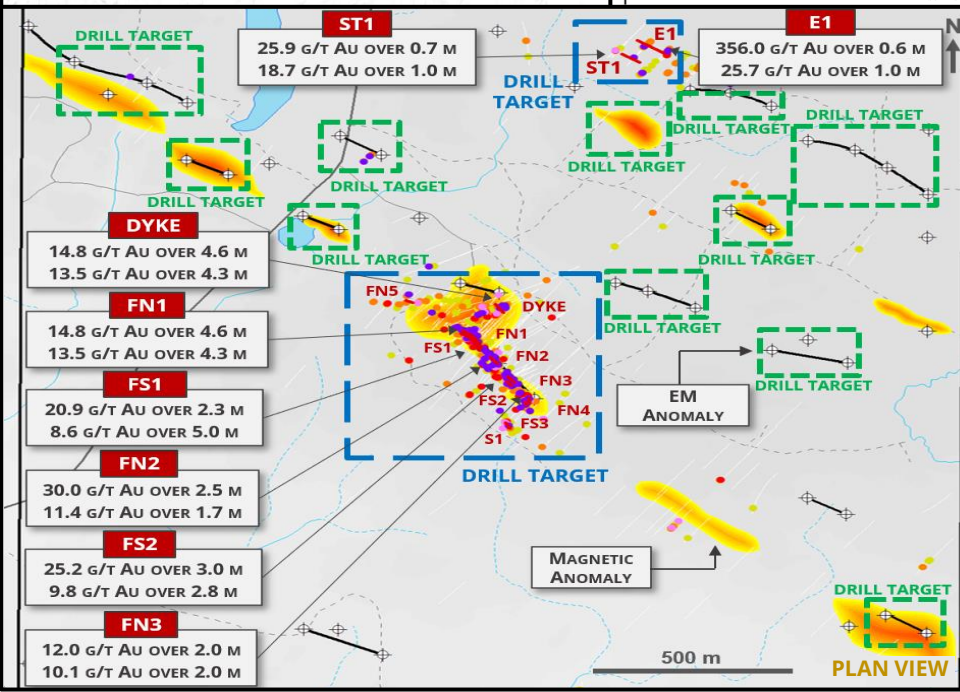
12 GOLD ZONES



### HIGHLIGHTS

### LOCATION

### TYPICAL CORE



### COMPOSITE LONG SECTION

The lengths of the historical mineralized intersections are expressed as lengths measured along the drill core.



TSXV: ECR | FSE: 6CA  
ressourcescartier.com



# BENOIST > SEEKING PARTNER OR SALE



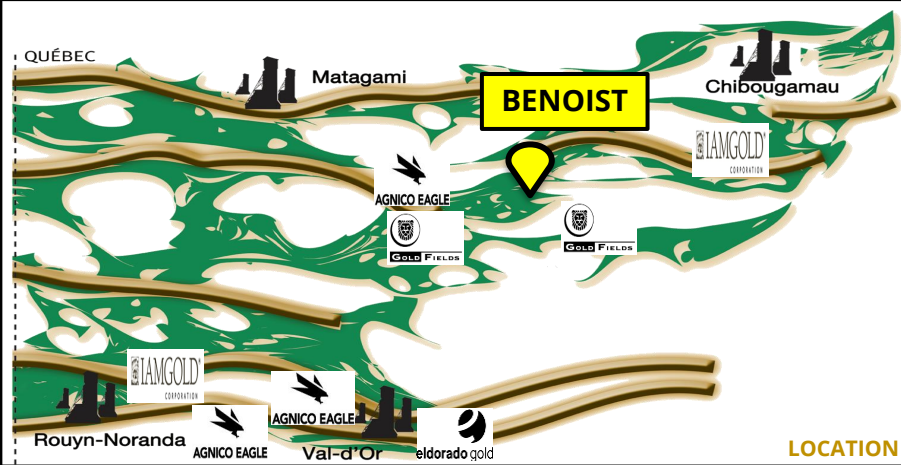
100 % ECR

73 CLAIMS

3,086 HA

2 GOLD ZONES

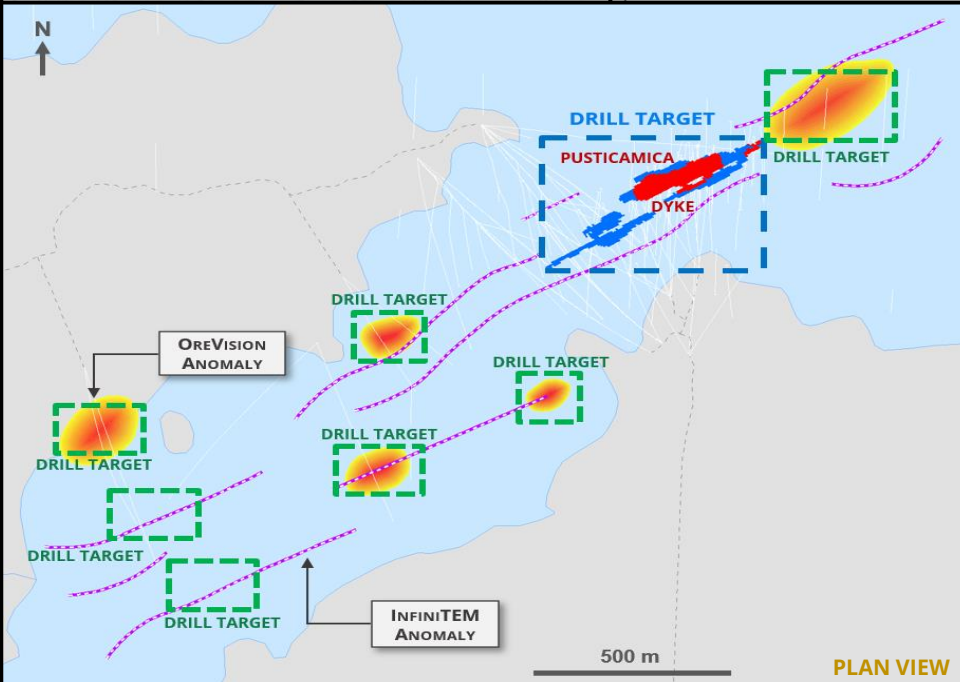
HIGHLIGHTS



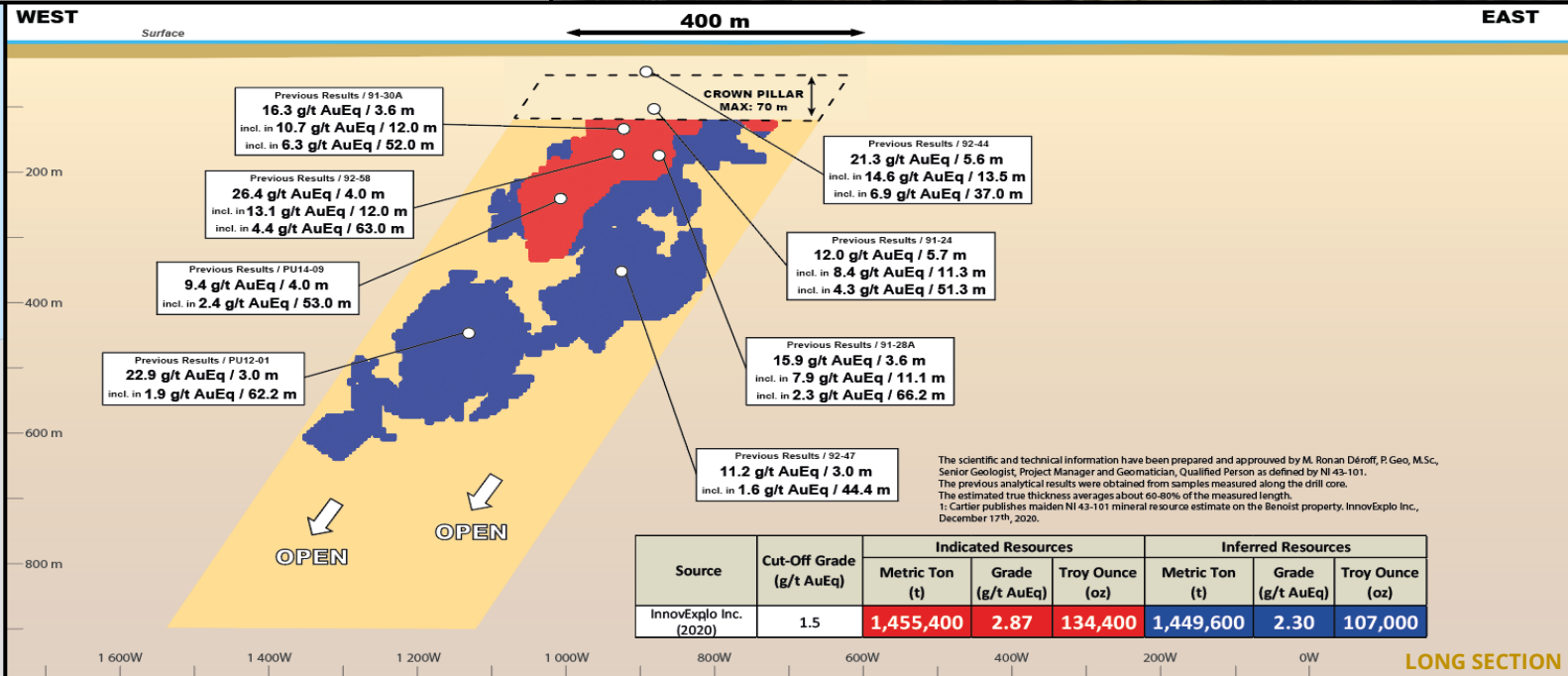
LOCATION



TYPICAL CORE



PLAN VIEW



LONG SECTION

Source	Cut-Off Grade (g/t AuEq)	Indicated Resources			Inferred Resources		
		Metric Ton (t)	Grade (g/t AuEq)	Troy Ounce (oz)	Metric Ton (t)	Grade (g/t AuEq)	Troy Ounce (oz)
InnovExplo Inc. (2020)	1.5	1,455,400	2.87	134,400	1,449,600	2.30	107,000

The scientific and technical information have been prepared and approved by M. Ronan Déruff, P.Geo, M.Sc., Senior Geologist, Project Manager and Geomatician, Qualified Person as defined by NI 43-101. The previous analytical results were obtained from samples measured along the drill core. The estimated true thickness averages about 60-80% of the measured length. 1: Cartier publishes maiden NI 43-101 mineral resource estimate on the Benoit property, InnovExplo Inc., December 17th, 2020.

The lengths of the historical mineralized intersections are expressed as lengths measured along the drill core.



TSXV: ECR | FSE: 6CA  
ressourcescartier.com

## IDEAL 2025

PROJECT

CATALYST

Q1

Q2

Q3

Q4

DEVELOPMENT  
ALTERNATIVES

INNOVATIVE TARGETING, DEV. PARTNER, M&A, BIY

CADILLAC

DRILLING 100,000-M  
BEST DISCOVERIES &  
EXPANSION EXPLORATION

DRILLING

WILSON

SEEK PARTNER OR SALE  
DRILLING

DRILLING

DRILLING

FENTON

SEEK PARTNER OR SALE  
DRILLING

DRILLING

DRILLING

BENOIST

SEEK PARTNER OR SALE

NEW

PROJECT GENERATION  
& ACQUISITION



## **Philippe Cloutier, P.Geo.**

President, CEO & Director

Email: [philippe.cloutier@ressourcescartier.com](mailto:philippe.cloutier@ressourcescartier.com)

Phone: 877-874-1331

Mobile: 819-856-0512

## **Cartier Resources**

1740, chemin Sullivan, suite 1 000

Val-d'Or (Quebec) J9P 7H1

