



**PRESENTATION FOR  
XPLOR CONFERENCE  
OCTOBER 30TH 2024**



**TSXV: ECR | FSE: 6CA**



# CAUTIONARY STATEMENTS

## Forward-Looking Statements

- This document may contain forward-looking statements that reflect management's current expectations with regards to future events. Such forward-looking statements are subject to certain factors and involve a number of risks and uncertainties. Actual results may differ from expected results. Factors that could cause our results, our operations or future events to change materially compared to expectations expressed or implied by the forward-looking statements include, but are not limited to, volatility in the price of gold, risks inherent to the mining industry, uncertainty regarding mineral resource estimations, and additional funding requirements or the company's ability to obtain such funding.

## Scientific and technical information

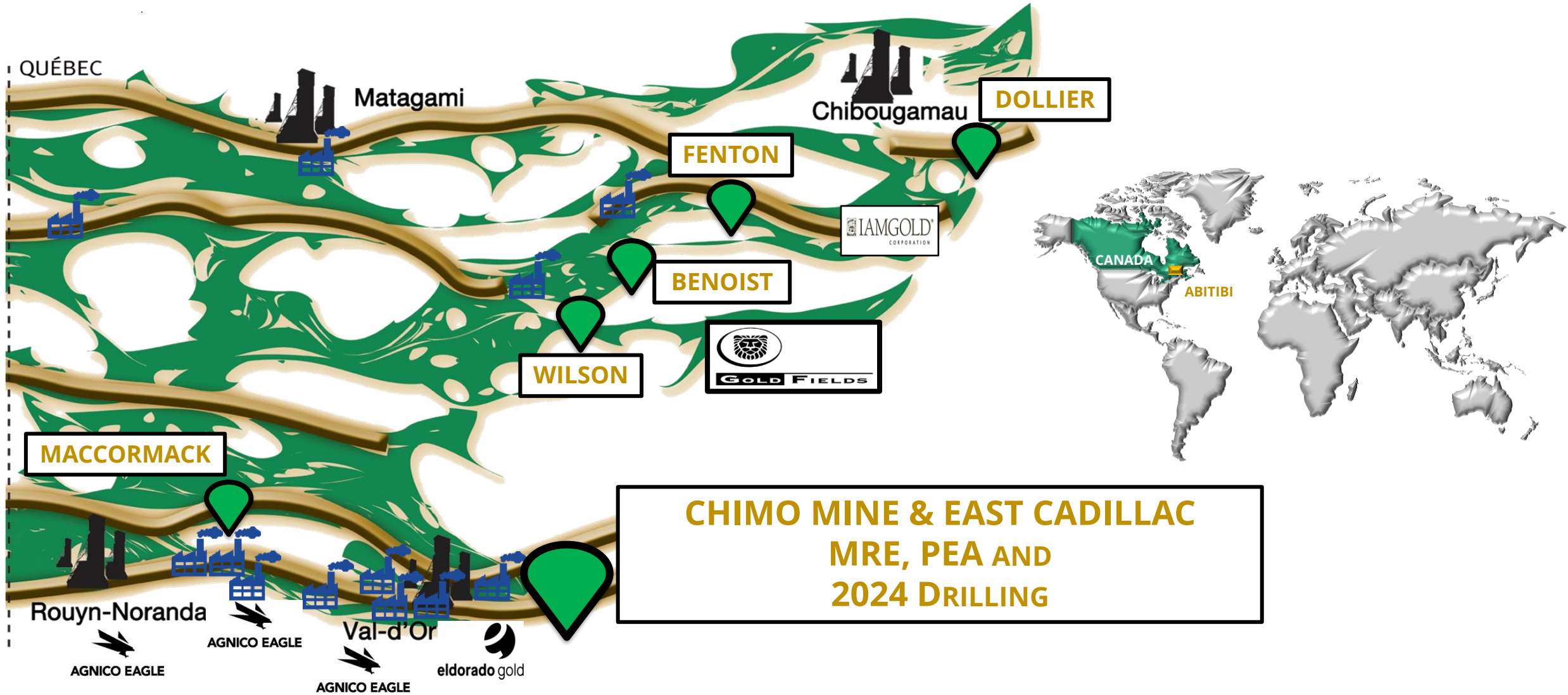
- The scientific and technical information in this presentation relating to the Chimo Mine project is supported by a technical report entitled "NI 43-101 Technical Report and Preliminary Economic Assessment for Chimo Mine and West Nordeau Gold Deposits, Chimo Mine and East Cadillac Properties, Quebec, Canada" and dated May 29, 2023, which was prepared by InnovExplo Inc. (Marc R. Beauvais, P. Eng.), with contributions from several independent consulting firms, including Bumigeme (Florent Baril) and Responsible Mining Solutions (Eric Sellars). An electronic copy of the report is available on SEDAR+ ([www.sedarplus.ca](http://www.sedarplus.ca)) and on Cartier Resources's corporate website (<https://ressourcescartier.com/fr/projets/mine-chimo/>).

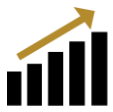
## Qualified Persons

- The scientific and/or technical information in this presentation has been prepared and reviewed by MM. Gaétan Lavallière, P. Geo., Ph. D., Vice President for Cartier Resources and Ronan Déroff, P. Geo., M. Sc., Senior Geologist, Project Manager and Geomatician, qualified persons as defined by National Instrument 43-101. Mr. Lavallière approved the information contained in this document.



# QUEBEC, ABITIBI GREENSTONE BELT: CARTIER PROJECTS

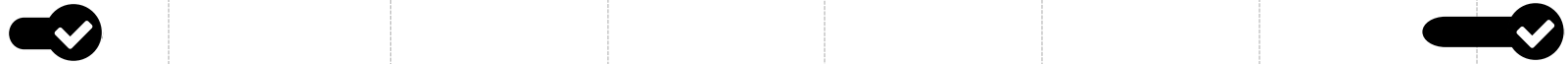




# CHIMO MINE & EAST CADILLAC PROPERTIES > TIMELINE<sup>1</sup>

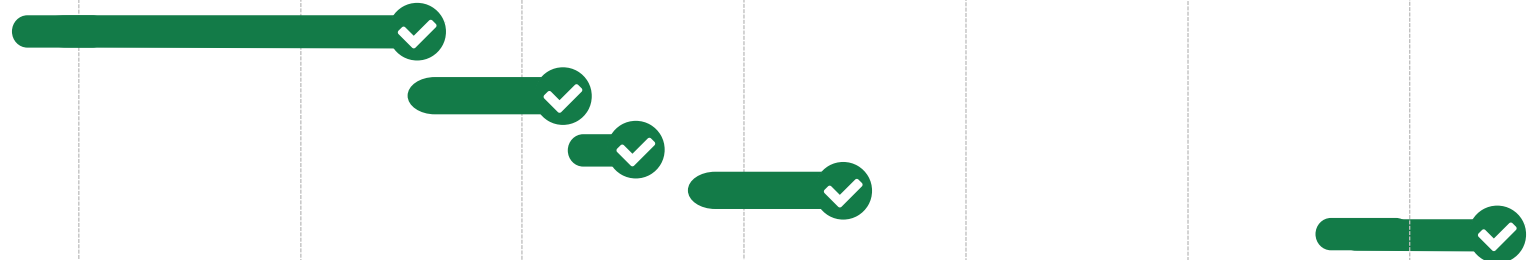


## ACQUISITIONS



## DRILL PROGRAMS

(177 DDH – 82,474 M)

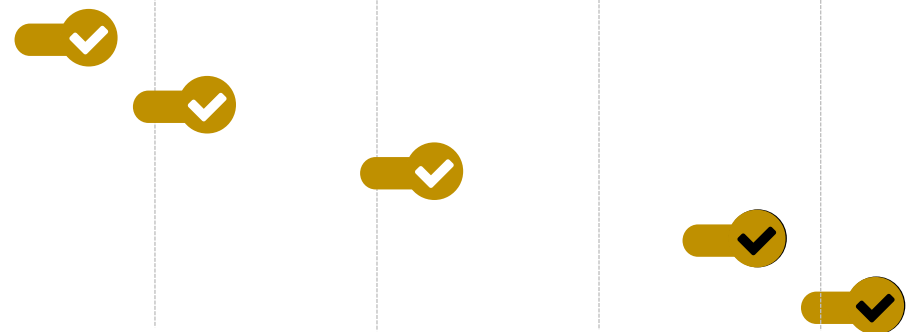


## DDH 2024 (174 DDH – 28,000 M)



## 43-101 (4 MRE + 1 PEA)

- MRE1 – 461,280 oz Au (ind.) + 417,250 oz Au (inf.)
- MRE2 – 585,190 oz Au (ind.) + 597,800 oz Au (inf.)
- MRE3 – 684,000 oz Au (ind.) + 1,358,000 oz Au (inf.)
- MRE4 – 720,000 oz Au (ind.) + 1,633,000 oz Au (inf.)
- PEA<sup>1</sup> – @ 1,750 USD/oz: Post-Tax NPV<sub>5%</sub> 388 M\$ CA, IRR 20,8 %



1. Refer to the full text of the Chimo Mine PEA technical report for the assumptions, qualifications and limitations relating to disclosure about the Preliminary Economic Assessment on the Chimo Mine Project.



# Project Highlights



## Current Gold Resource Estimate<sup>1</sup>:

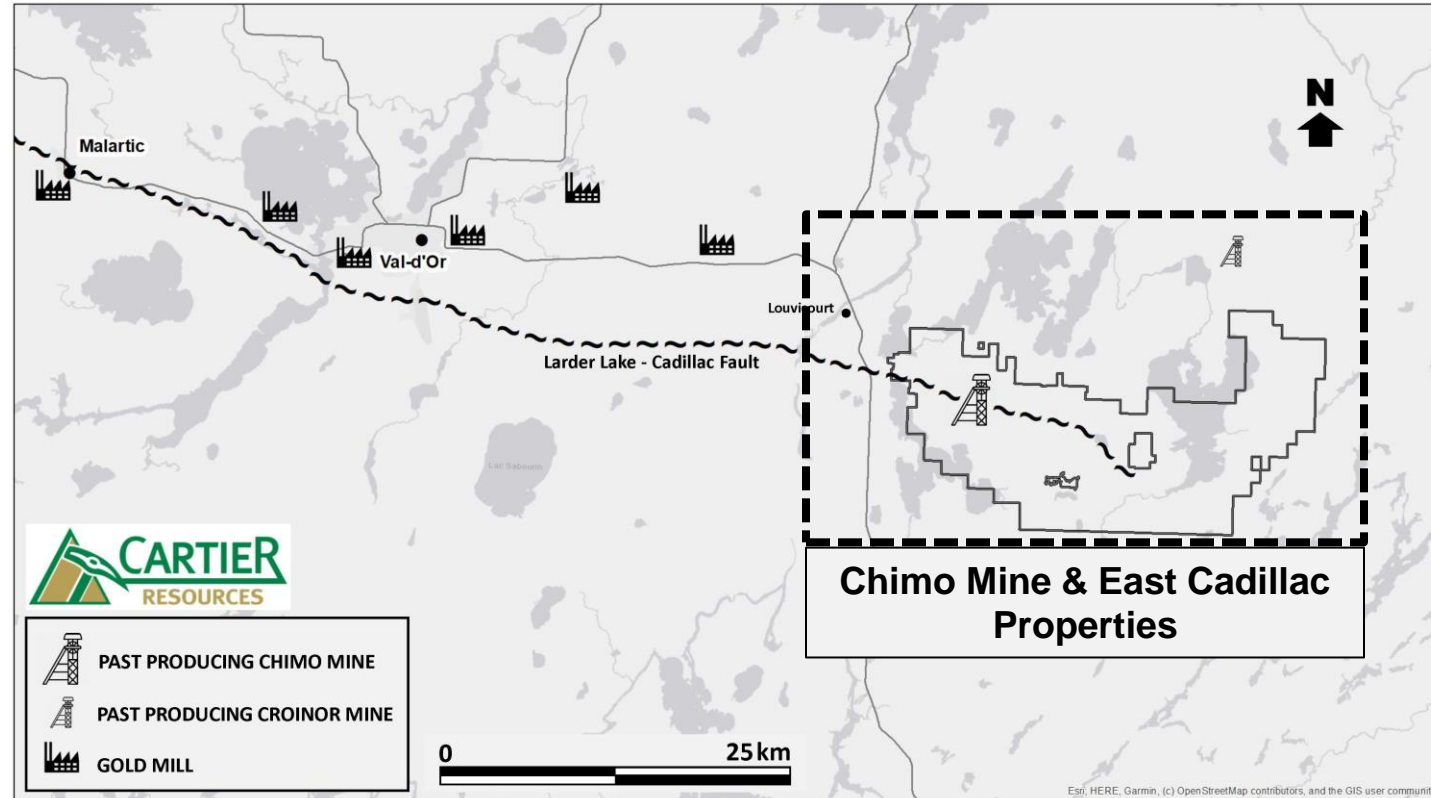
- 7.1 Mt at 3.14 g/t for 720,000 oz in the indicated category
- 18.5 Mt at 2.75 g/t for 1,633,000 oz in the inferred category

## Current PEA<sup>2</sup>: 1,750 USD

- Post-Tax NPV<sub>5%</sub> 388 M\$CAD, 20.8% IRR

## Project Advantages:

- Located in a low-risk mining-friendly region
- Key infrastructure present: power line, shaft tailings management facility, etc.
- Proximity of labor pool and suppliers

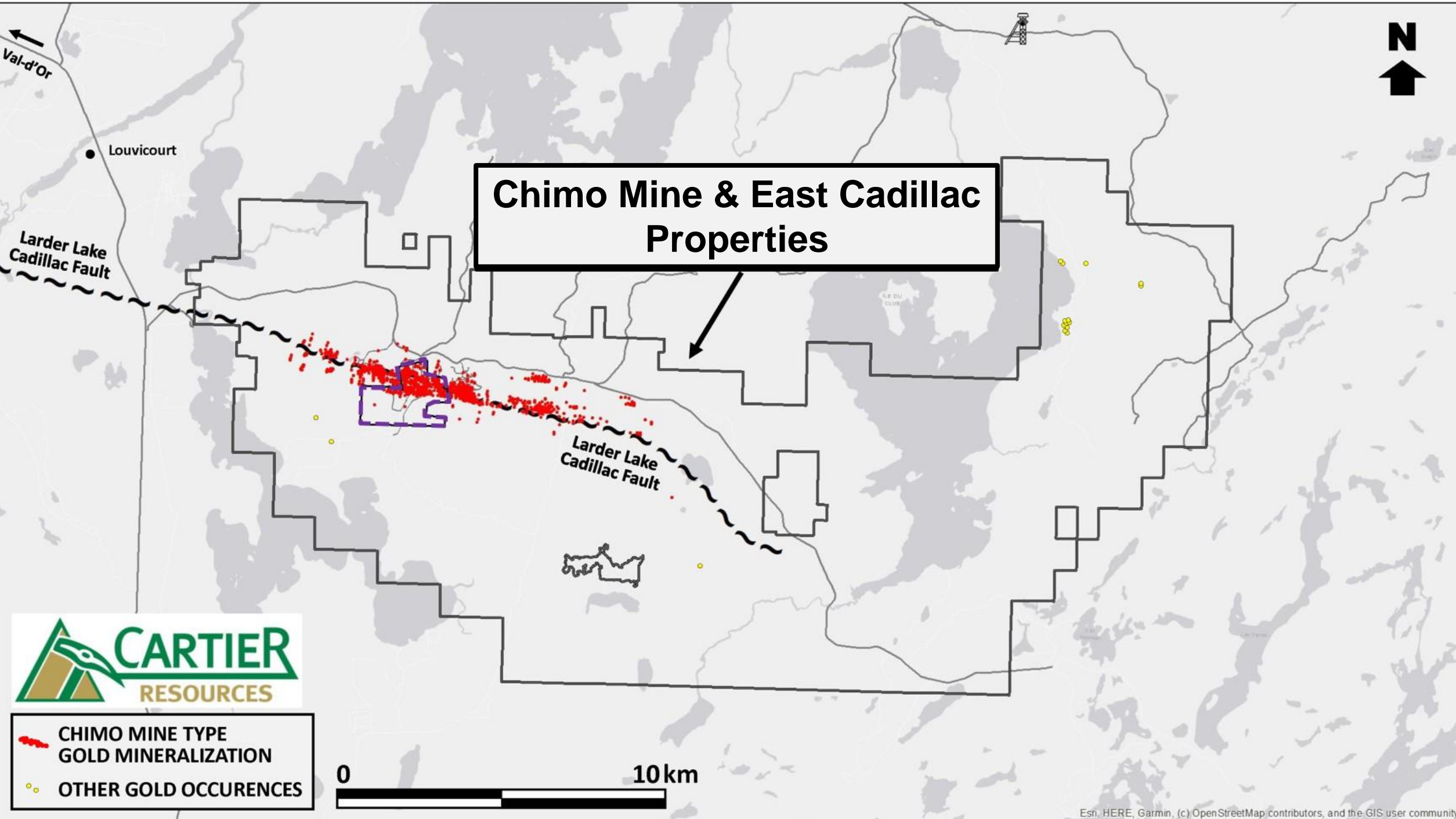


**Note 1:** NI 43-101 Mineral Resources Estimate for Chimo Mine and West Nordeau Gold Deposits, Québec, Canada, Vincent Nadeau-Benoit, P.Geo., Alain Carrier, P.Geo., M.Sc. and Marc R. Beauvais, P.Eng., InnovExplo Inc., August 22nd, 2022. NI 43-101 report filed on SEDAR October 13<sup>th</sup>, 2022.

**Note 2:** NI 43-101 Technical Report and Preliminary Economic Assessment for the Chimo Mine and West Nordeau Gold Deposits, Chimo Mine and East Cadillac Properties, Quebec, Canada, Mr. Marc R. Beauvais, P.Eng. of InnovExplo, Mr. Florent Baril of Bumigeme and Mr. Eric Sellars, P. Eng. de Responsible Mining Solutions, April 13th, 2023. NI 43-101 report filed on SEDAR May 29th, 2023.



# Chimo Mine & East Cadillac Properties

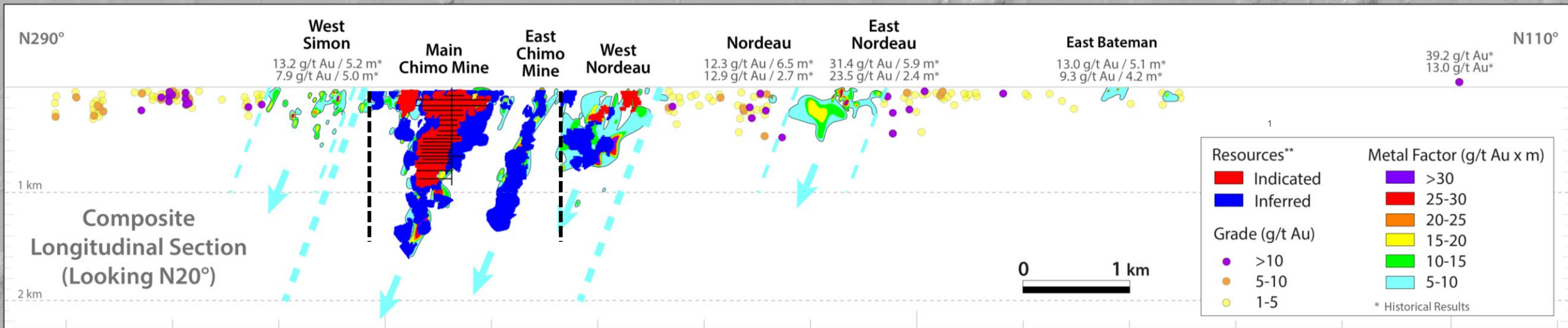
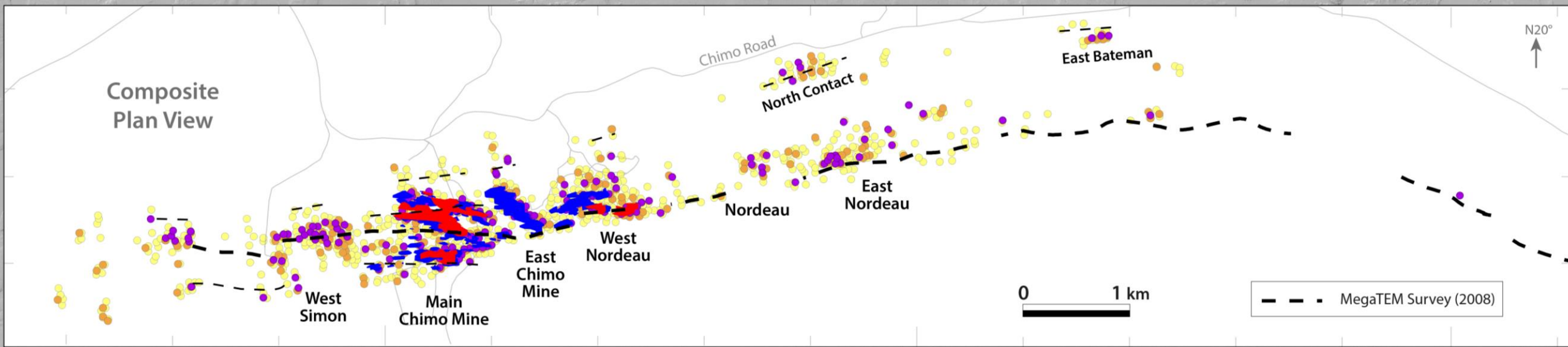


-  CHIMO MINE TYPE GOLD MINERALIZATION
-  OTHER GOLD OCCURENCES





# REGIONAL DDH COMPILATION > PLAN & LONGITUDINAL SECTION

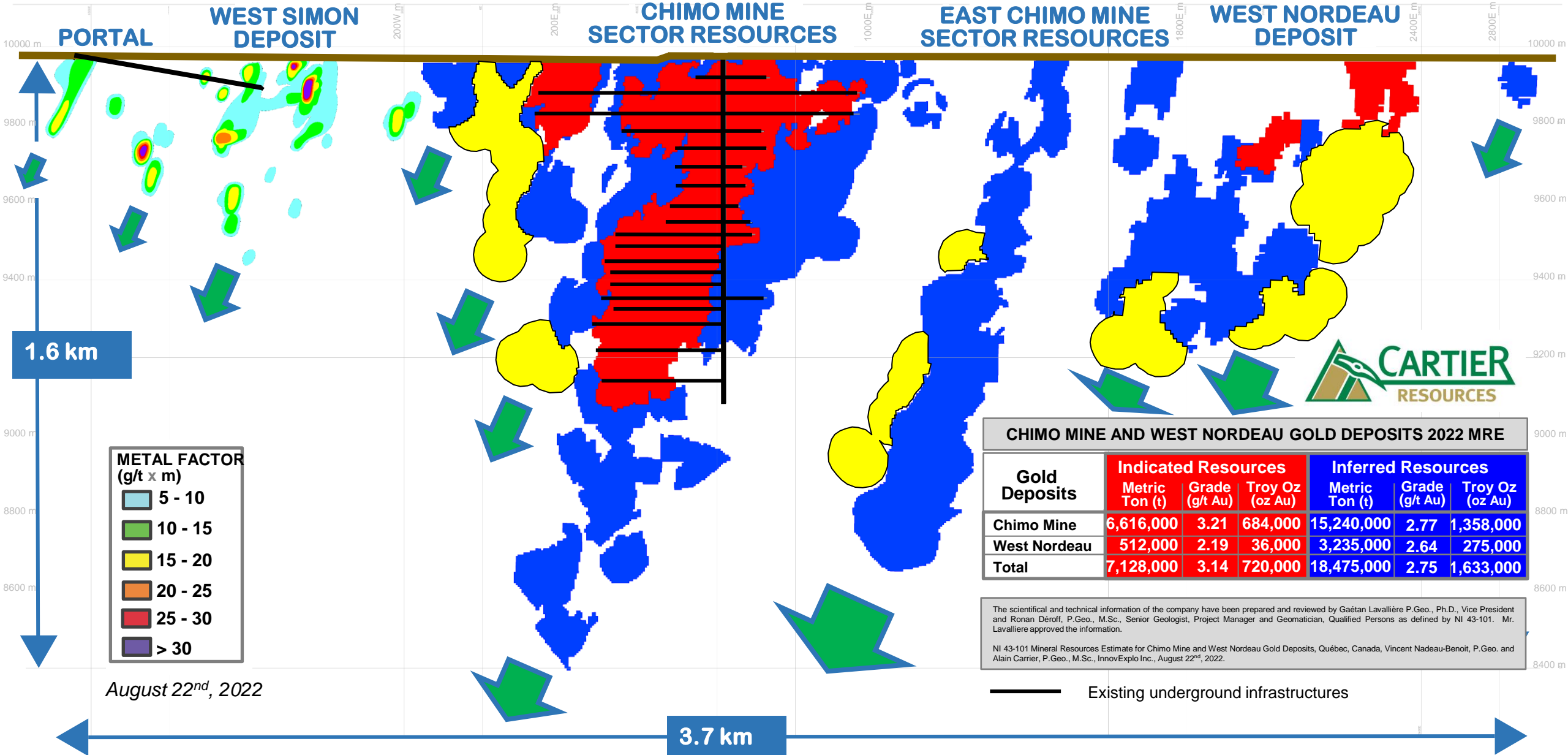


1. Refer to the full text of the Chimo Mine PEA technical report for the assumptions, qualifications and limitations relating to disclosure about the Preliminary Economic Assessment on the Chimo Mine Project

WEST

EAST

# CHIMO MINE GOLD SYSTEM LONGITUDINAL COMPOSITE SECTION



CHIMO MINE AND WEST NORDEAU GOLD DEPOSITS 2022 MRE

| Gold Deposits | Indicated Resources |                |                 | Inferred Resources |                |                  |
|---------------|---------------------|----------------|-----------------|--------------------|----------------|------------------|
|               | Metric Ton (t)      | Grade (g/t Au) | Troy Oz (oz Au) | Metric Ton (t)     | Grade (g/t Au) | Troy Oz (oz Au)  |
| Chimo Mine    | 6,616,000           | 3.21           | 684,000         | 15,240,000         | 2.77           | 1,358,000        |
| West Nordeau  | 512,000             | 2.19           | 36,000          | 3,235,000          | 2.64           | 275,000          |
| <b>Total</b>  | <b>7,128,000</b>    | <b>3.14</b>    | <b>720,000</b>  | <b>18,475,000</b>  | <b>2.75</b>    | <b>1,633,000</b> |

The scientific and technical information of the company have been prepared and reviewed by Gaétan Lavallière P.Geo., Ph.D., Vice President and Ronan Déroff, P.Geo., M.Sc., Senior Geologist, Project Manager and Geomatician, Qualified Persons as defined by NI 43-101. Mr. Lavallière approved the information.

NI 43-101 Mineral Resources Estimate for Chimo Mine and West Nordeau Gold Deposits, Québec, Canada, Vincent Nadeau-Benoit, P.Geo. and Alain Carrier, P.Geo., M.Sc., InnovExplo Inc., August 22<sup>nd</sup>, 2022.

Existing underground infrastructures

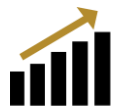
August 22<sup>nd</sup>, 2022

1.6 km

3.7 km







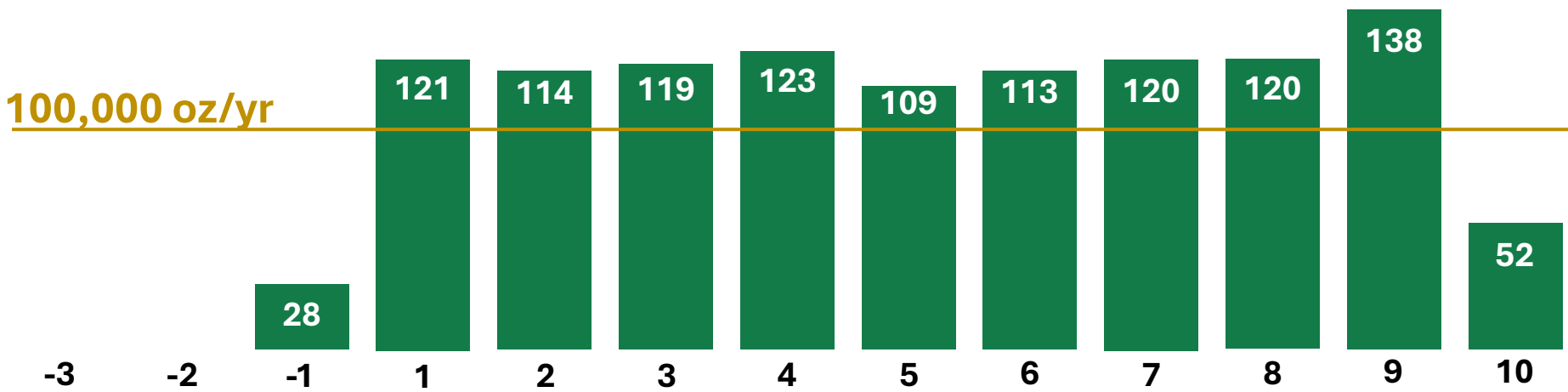
# CHIMO MINE > RESULTS OF PRELIMINARY ECONOMIC ASSESSMENT<sup>1</sup> (2023)



## HIGHLIGHTS

|                  |  |                          |                   |                             |
|------------------|--|--------------------------|-------------------|-----------------------------|
| <b>MINE LIFE</b> | <b>MINE/FEED GRADE</b>                             | <b>Mine/Mill Tonnage</b> | <b>PRODUCTION</b> | <b>TOTAL GOLD RECOVERED</b> |
| 10 Yrs           | 2.7/4.6 g/t Au                                     | 4,500/2,400 tpd          | 116,900 oz/yr     | 1.2 Moz                     |
| <b>CAPEX</b>     | <b>NPV5%   IRR</b><br>(US\$1,750/oz Au, after-tax) | <b>PAYBACK</b>           | <b>AISC</b>       | <b>OPERATING COST</b>       |
| C\$341 M         | C\$388 M   21%                                     | 2.9 Yrs                  | US\$755/oz Au     | \$107/t milled              |

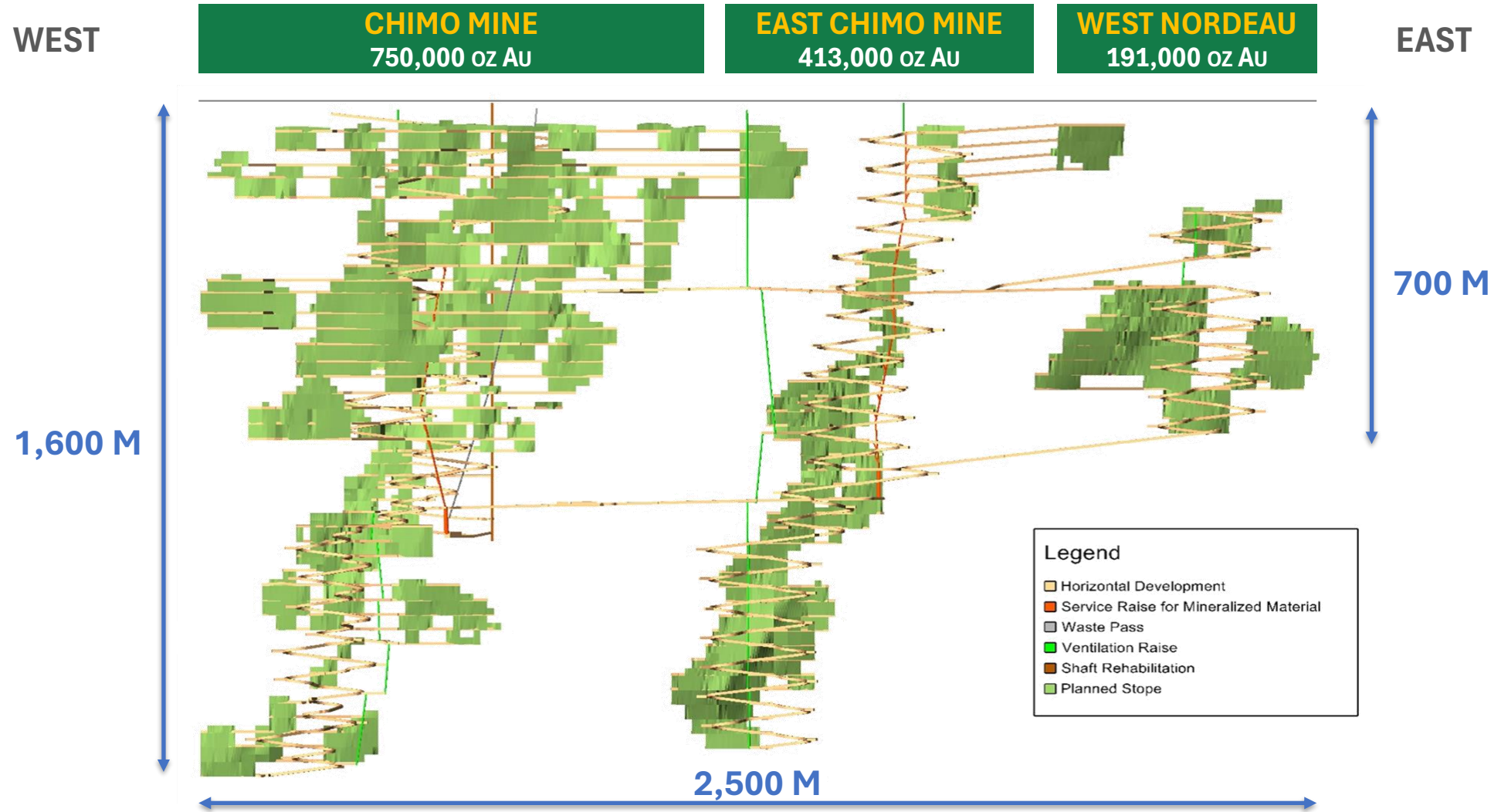
## PRODUCTION PROFILE (KOZ/YR)



1. Refer to the full text of the Chimo Mine PEA technical report for the assumptions, qualifications and limitations relating to disclosure about the Preliminary Economic Assessment on the Chimo Mine Project



# CHIMO MINE > LONGITUDINAL SECTION OF MINE DESIGN<sup>1</sup>



1. Refer to the full text of the Chimo Mine PEA technical report for the assumptions, qualifications and limitations relating to disclosure about the Preliminary Economic Assessment on the Chimo Mine Project

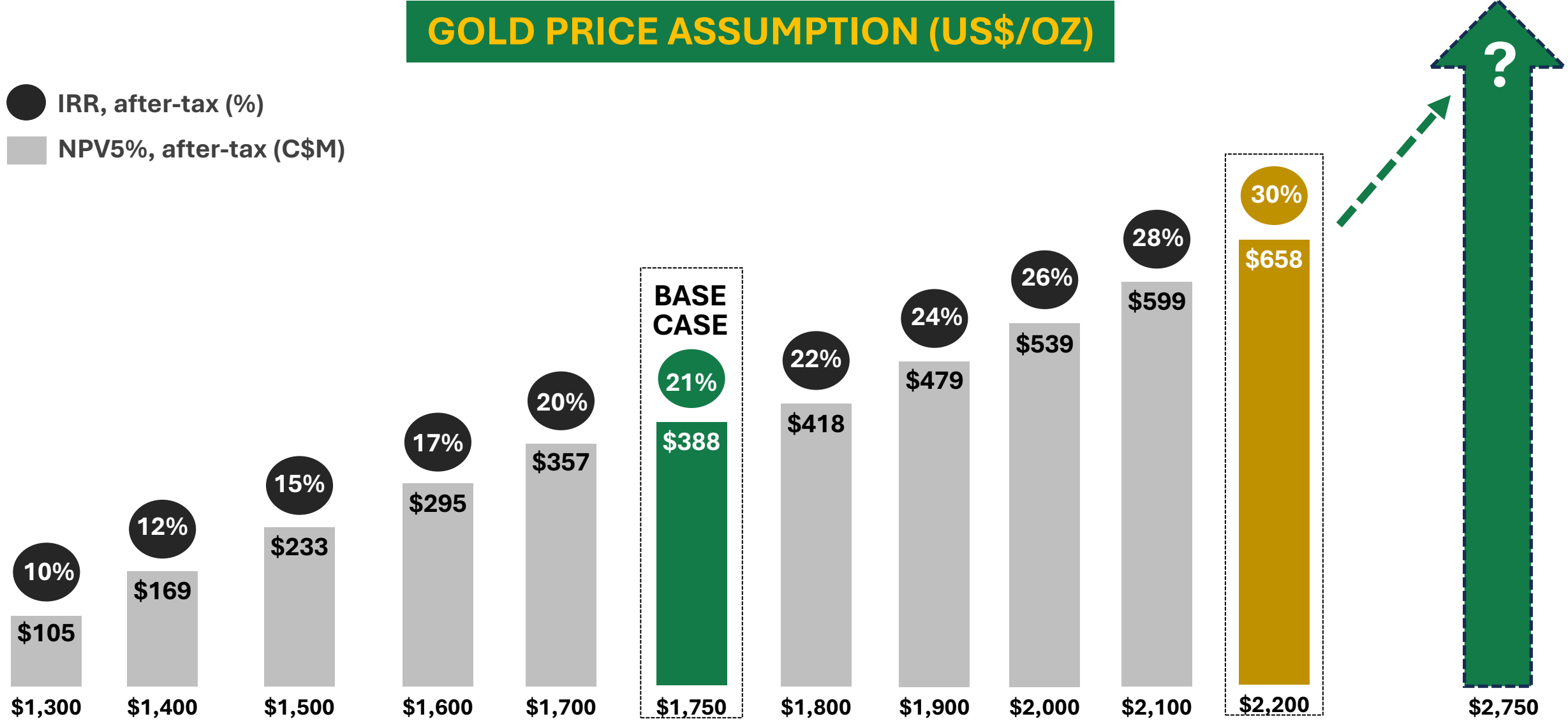


# CHIMO MINE > GOLD PRICE SENSITIVITY<sup>1</sup>



## GOLD PRICE ASSUMPTION (US\$/OZ)

● IRR, after-tax (%)  
 ■ NPV5%, after-tax (C\$M)



1. Refer to the full text of the Chimo Mine PEA technical report for the assumptions, qualifications and limitations relating to disclosure about the Preliminary Economic Assessment on the Chimo Mine Project



# East Cadillac: 28,000 m (174 DDH) DRILL PROGRAM



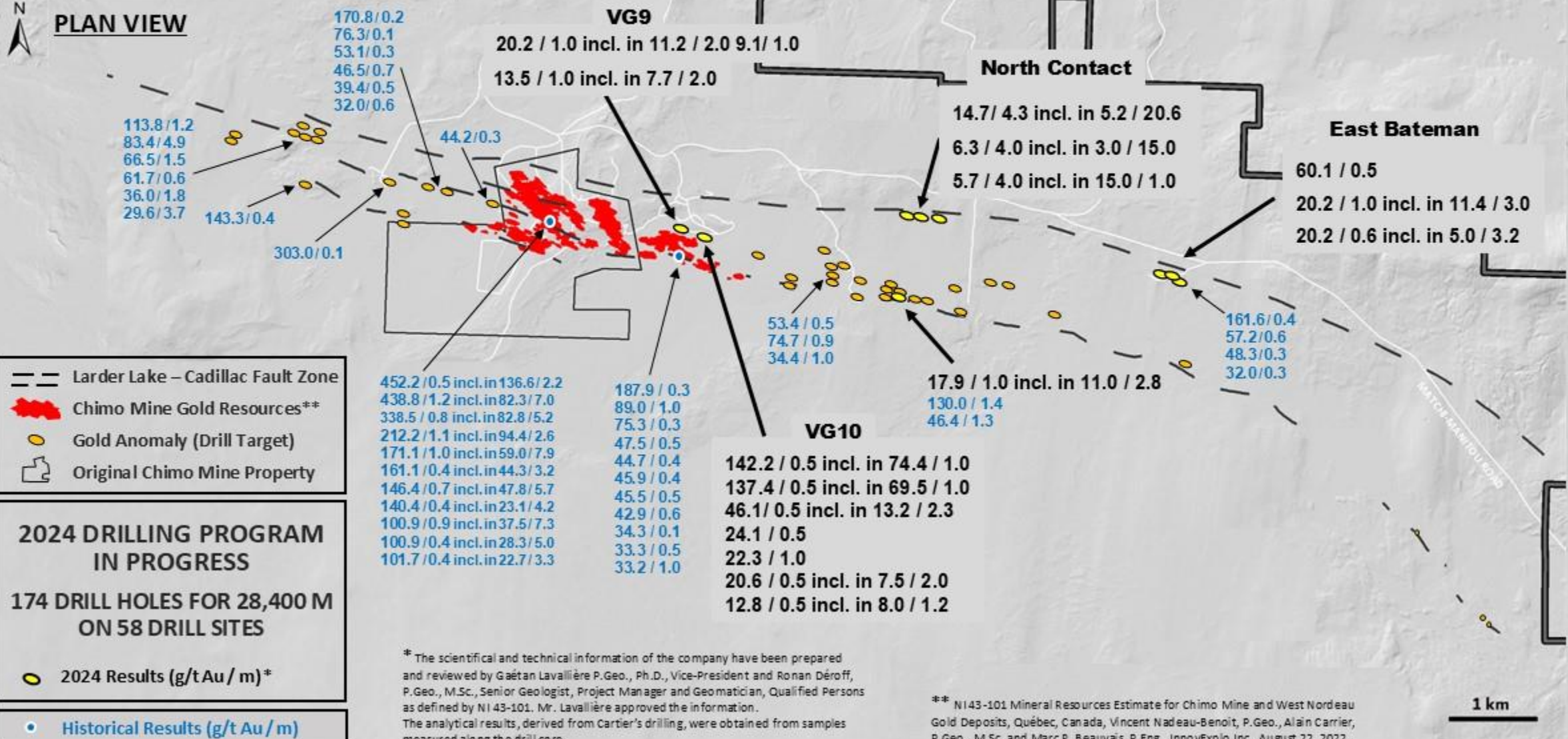
- Two drills exploring high-grade gold targets along the regional Larder Lake – Cadillac Fault Zone
- 174-hole drill program for a total of 28,000 m
- To date 5 zones identified over 8 km
  - New gold systems
  - Multiple high-grade gold intersections over considerable widths
  - Offer a variety of options generating numerous exploration opportunities to discover one or more gold systems



# East Cadillac Project High-Grade Gold Intersection 2024 Results and Historical Results



## PLAN VIEW



- Larder Lake - Cadillac Fault Zone
- Chimo Mine Gold Resources\*\*
- Gold Anomaly (Drill Target)
- Original Chimo Mine Property

**2024 DRILLING PROGRAM  
IN PROGRESS**

**174 DRILL HOLES FOR 28,400 M  
ON 58 DRILL SITES**

- 2024 Results (g/t Au / m)\*
- Historical Results (g/t Au / m)

170.8/0.2  
76.3/0.1  
53.1/0.3  
46.5/0.7  
39.4/0.5  
32.0/0.6

113.8/1.2  
83.4/4.9  
66.5/1.5  
61.7/0.6  
36.0/1.8  
29.6/3.7

143.3/0.4  
303.0/0.1

452.2/0.5 incl. in 136.6/2.2  
438.8/1.2 incl. in 82.3/7.0  
338.5/0.8 incl. in 82.8/5.2  
212.2/1.1 incl. in 94.4/2.6  
171.1/1.0 incl. in 59.0/7.9  
161.1/0.4 incl. in 44.3/3.2  
146.4/0.7 incl. in 47.8/5.7  
140.4/0.4 incl. in 23.1/4.2  
100.9/0.9 incl. in 37.5/7.3  
100.9/0.4 incl. in 28.3/5.0  
101.7/0.4 incl. in 22.7/3.3

187.9/0.3  
89.0/1.0  
75.3/0.3  
47.5/0.5  
44.7/0.4  
45.9/0.4  
45.5/0.5  
42.9/0.6  
34.3/0.1  
33.3/0.5  
33.2/1.0

**VG9**  
20.2 / 1.0 incl. in 11.2 / 2.0  
13.5 / 1.0 incl. in 7.7 / 2.0

**VG10**  
142.2 / 0.5 incl. in 74.4 / 1.0  
137.4 / 0.5 incl. in 69.5 / 1.0  
46.1 / 0.5 incl. in 13.2 / 2.3  
24.1 / 0.5  
22.3 / 1.0  
20.6 / 0.5 incl. in 7.5 / 2.0  
12.8 / 0.5 incl. in 8.0 / 1.2

53.4/0.5  
74.7/0.9  
34.4/1.0

**North Contact**  
14.7 / 4.3 incl. in 5.2 / 20.6  
6.3 / 4.0 incl. in 3.0 / 15.0  
5.7 / 4.0 incl. in 15.0 / 1.0

161.6/0.4  
57.2/0.6  
48.3/0.3  
32.0/0.3

**East Bateman**  
60.1 / 0.5  
20.2 / 1.0 incl. in 11.4 / 3.0  
20.2 / 0.6 incl. in 5.0 / 3.2

\* The scientific and technical information of the company have been prepared and reviewed by Gaëtan Lavallière P.Geo., Ph.D., Vice-President and Ronan Déroff, P.Geo., M.Sc., Senior Geologist, Project Manager and Geomatician, Qualified Persons as defined by NI 43-101. Mr. Lavallière approved the information. The analytical results, derived from Cartier's drilling, were obtained from samples measured along the drill core.

\*\* NI43-101 Mineral Resources Estimate for Chimo Mine and West Nordeau Gold Deposits, Québec, Canada, Vincent Nadeau-Benoit, P.Geo., Alain Carrier, P.Geo., M.Sc. and Marc R. Beauvais, P.Eng., InnovExplo Inc., August 22, 2022.

1 km



# EAST CADILLAC PROPERTY 2024 HIGH-GRADE GOLD RESULTS PLAN VIEW



**PORTAL**  
7.2 / 8.0 incl. 12.5 / 2.0 and 26.2 / 0.5  
7.2 / 0.5

**NORTH CONTACT**  
14.7 / 4.3 incl. in 5.2 / 20.6  
6.3 / 4.0 incl. in 3.0 / 15.0  
5.7 / 4.0 incl. 15.0 / 1.0

**8 km**

17.9 / 1.0  
incl. in 11.0 / 2.8

**VG9**  
20.2 / 1.0 incl. in 11.2 / 2.0  
9.1 / 1.0  
13.5 / 1.0 incl. in 7.7 / 2.0

**VG10**  
142.2 / 0.5 incl. in 74.4 / 1.0  
137.4 / 0.5 incl. in 69.5 / 1.0  
24.1 / 0.5  
22.3 / 1.0  
12.8 / 0.5 incl. in 8.0 / 1.2  
46.1 / 0.5 incl. in 13.2 / 2.3  
20.6 / 0.5 incl. in 7.5 / 2.0

**EAST BATEMAN**  
60.1 / 0.5  
20.2 / 1.0 incl. in 11.4 / 3.0  
20.2 / 0.6 incl. in 5.0 / 3.2

- Larder Lake – Cadillac Fault Zone
- Chimo Mine Gold Resources\*\*
- Gold Anomaly (Drill Target)
- Original Chimo Mine Property

- DRILLING RESULTS**
- New Gold Results (g/t Au / m)\*
  - 2024 Previous Results (g/t Au / m)

October 30, 2024

\* The scientific and technical information of the company have been prepared and reviewed by Gaétan Lavallière P.Geo., Ph.D., Vice-President and Ronan Déroff, P.Geo., M.Sc., Senior Geologist, Project Manager and Geomatician, Qualified Persons as defined by NI 43-101. Mr. Lavallière approved the information. The analytical results, derived from Cartier's drilling, were obtained from samples measured along the drill core. The estimated true thickness averages about 85-95% of the measured length.

\*\* NI 43-101 Mineral Resources Estimate for Chimo Mine and West Nordeau Gold Deposits, Québec, Canada, Vincent Nadeau-Benoit, P.Geo., Alain Carrier, P.Geo., M.Sc. and Marc R. Beauvais, P.Eng., InnovExplo Inc., August 22, 2022.

1 km

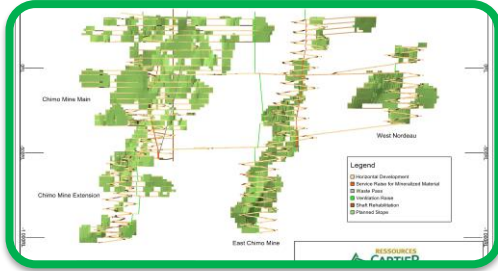
CHIMO ROAD

BLANCHIN ROAD

BLUE GRASS

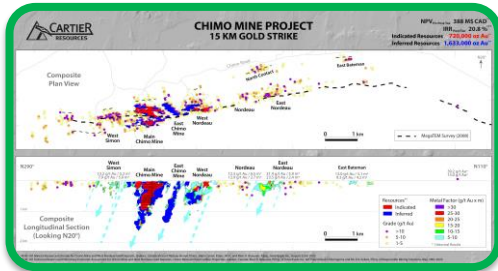
WEST PORTAL

MATCHI-MANTOU ROAD



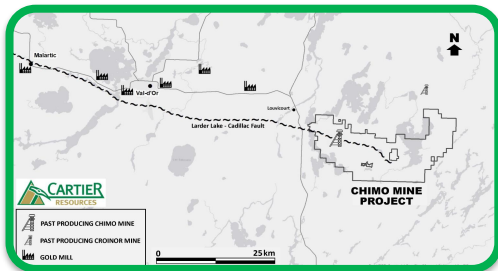
## Positive Preliminary Economics at Flagship Chimo Mine Project

- Multiple opportunities to improve already positive project economics
- Carbon-Friendly gold project, higher grades via ore sorting technology
- Potential to increase resources near infrastructure



## Large Land Package with Significant Resource Expansion Potential

- Hosts 15km favorable gold strike with historical discoveries open at depth and along strike
- Current sector contributing to PEA and MRE occupies 25% of favorable gold strike
- Drill-ready programs on both: PEA recommendations & 15km favorable gold strike

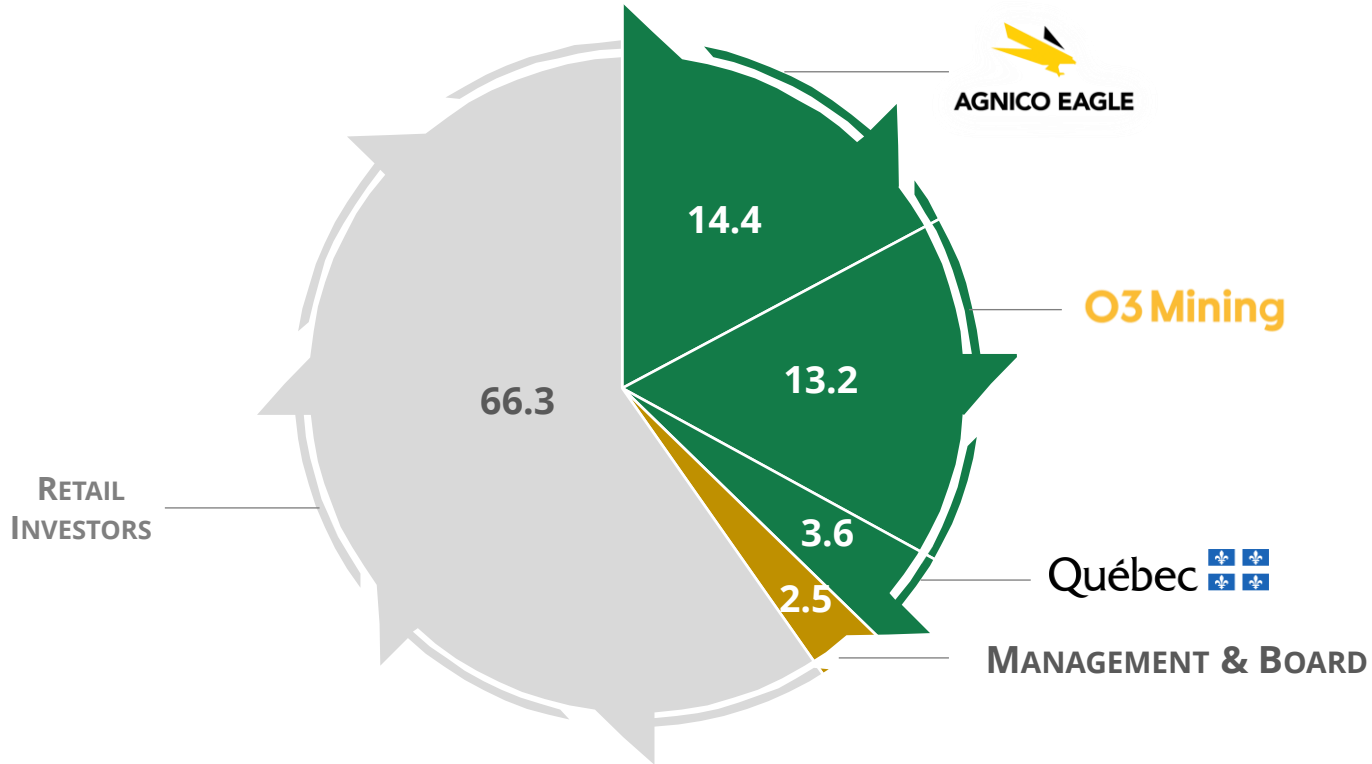


## Mining-Friendly Jurisdiction with Proximity to Supporting Infrastructure

- Pathway to production with reduction of risk and upfront capital
- Potential toll milling scenario
- Access to qualified workforce



## SHAREHOLDER OWNERSHIP



## KEY FINANCIALS

|   |                        |
|---|------------------------|
| Current Share Price (closing price on Nov. 6, 2024) | <b>C\$0.11</b> / share |
| Shares Outstanding                                  | <b>351.8</b> million   |
| Market Capitalization                               | <b>C\$38.7</b> million |
| Net Cash  | <b>C\$1.0</b> million  |
| Enterprise Value (EV)                               | <b>C\$37.7</b> million |
| NPV/shares issued                                   | <b>C\$1.10</b>         |
| EV/oz Au  | <b>C\$9</b> / oz Au    |



**Philippe Cloutier**, P.GEO

President, CEO & Director

**Email:** [philippe.cloutier@ressourcescartier.com](mailto:philippe.cloutier@ressourcescartier.com)

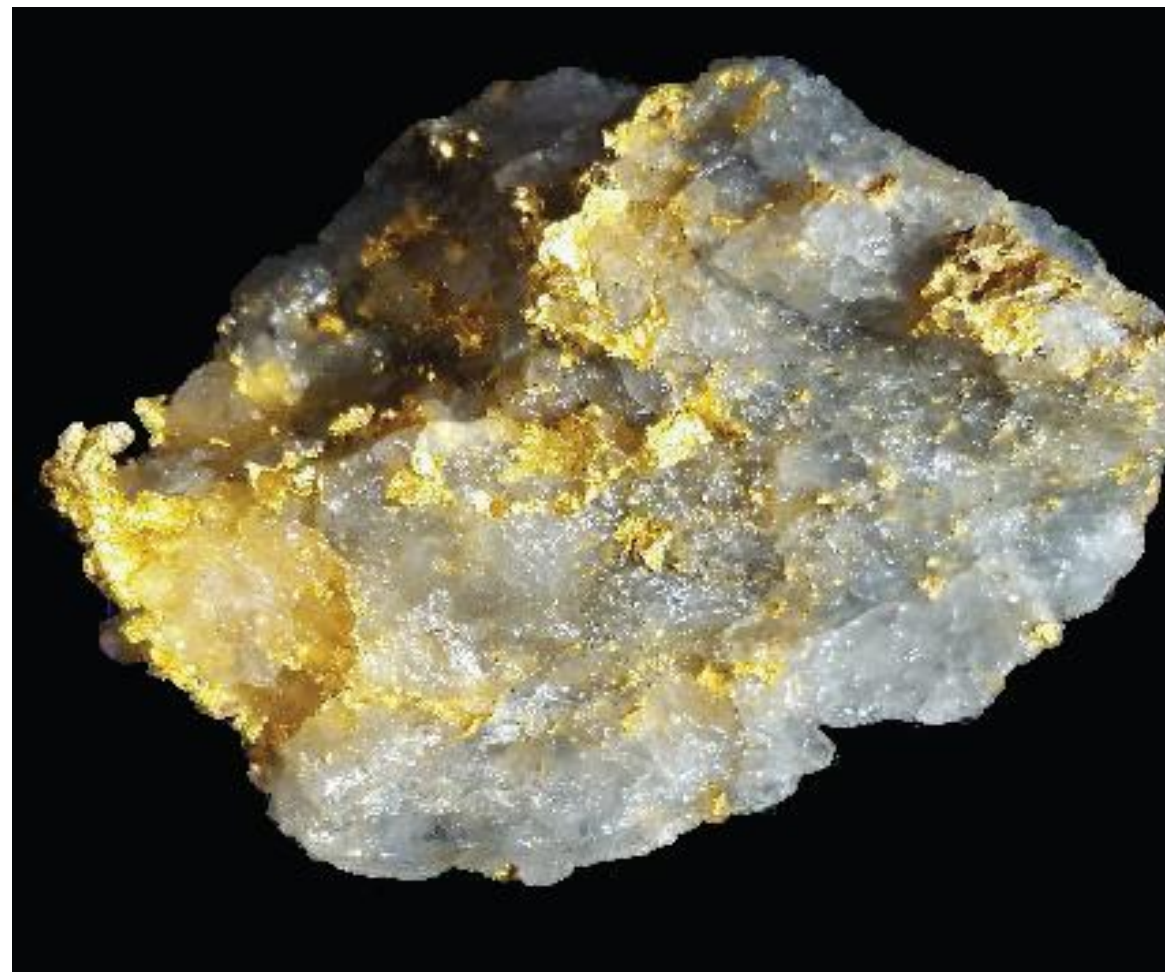
**Phone:** 877-874-1331

**Mobile:** 819-856-0512

**Cartier Resources**

1740, chemin Sullivan, suite 1000

Val-d'Or (Québec) J9P 7H1



Chimo Mine Visible Gold Sample from Zone 5B, Level 17, 108.4 g /t Au over 2.0 m  
Courtesy of Mr. Tony Brisson, Mine Geologist, 1995