



**Corporate Presentation
October 2024 Update**

**TSXV: ECR
FSE: 6CA**

NEW GOLD CAMP EAST OF VAL-D'OR MINING DISTRICT





Cautionary Statement

Forward-Looking Statements

- This document may contain forward-looking statements that reflect management's current expectations with regards to future events. Such forward-looking statements are subject to certain factors and involve a number of risks and uncertainties. Actual results may differ from expected results. Factors that could cause our results, our operations or future events to change materially compared to expectations expressed or implied by the forward-looking statements include, but are not limited to, volatility in the price of gold, risks inherent to the mining industry, uncertainty regarding mineral resource estimations, and additional funding requirements or the Company's ability to obtain such funding.

Qualified Persons

- The scientific and/or technical information presented in this presentation has been prepared and reviewed by MM. Gaétan Lavallière, P. Geo., Ph. D., Vice President for Cartier Resources and Ronan Déroff, P. Geo., M. Sc., Senior Geologist, Project Manager and Geomatician, qualified persons as defined by National Instrument 43-101. Mr. Lavallière approved the information contained in this document.



The Value Proposition

Key upside elements:

- Currently trading at 10% of full value of Flagship asset: Chimo Mine Project
- Value Chimo Mine & East Cadillac properties provided by
 - 2022 Mineral Resource Estimate (MRE)
 - 2023 Preliminary Economic Assessment (PEA)
 - **'Mining Country'** - Proximity to Infrastructure & Qualified Workforce
- Hosts 15km favorable gold strike with historical discoveries* open at depth and along strike
- Drilling in 2024 on recently acquired *East Cadillac property - projected to date:
 - **174 drill holes for 28,400 meters**

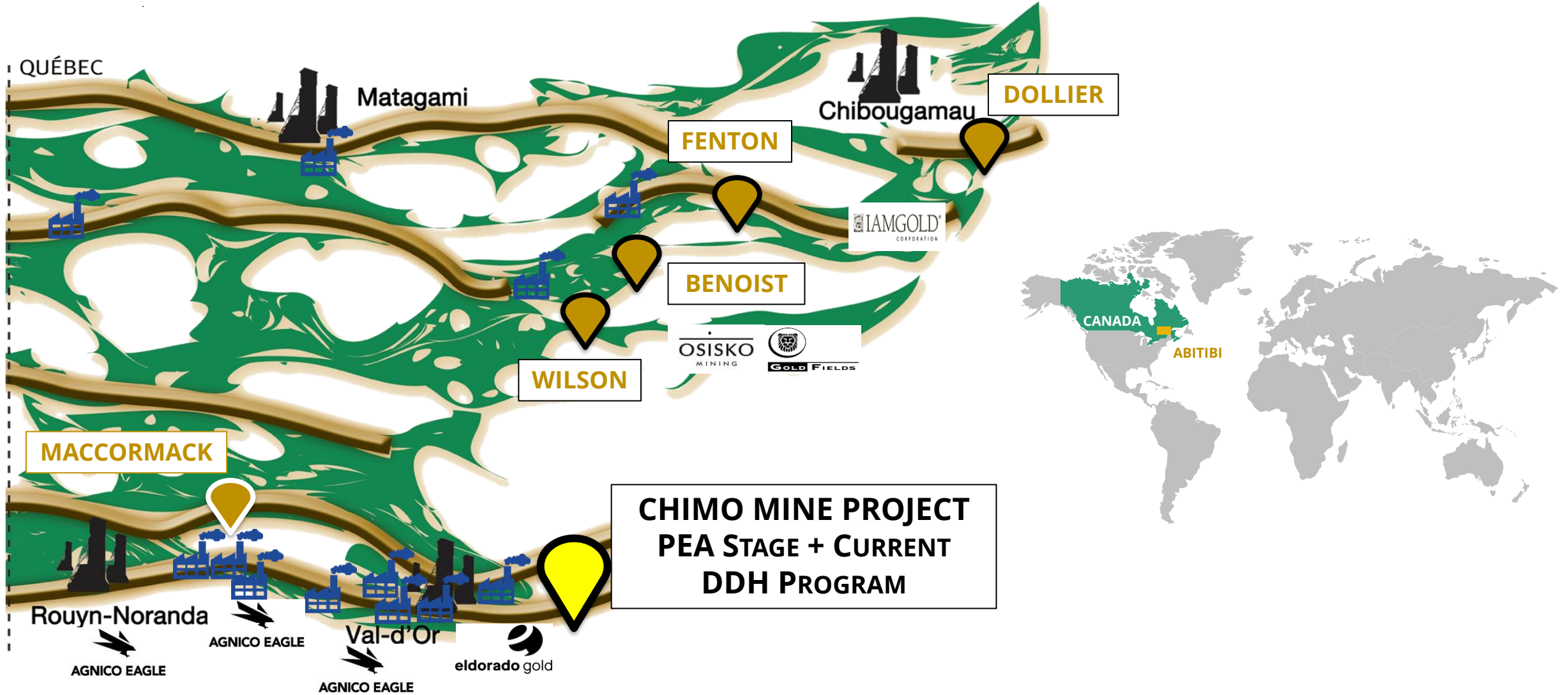
Where the value comes from...



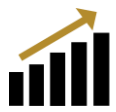
TSXV: ECR



ABITIBI GREENSTONE BELT: TOP 3 GOLD JURISDICTIONS IN THE WORLD



TSXV: ECR



Chimo Mine Past Production + Recent Project Progress

Gold prices



Data as of 25 March, 2024

Sources: FastMarkets, ICE Benchmark Administration, Thomson Reuters, World Gold Council; Disclaimer <https://www.gold.org/terms-and-conditions#proprietary-rights>



Chimo Mine & East Cadillac Property Highlights

Current Gold Resource Estimate¹:

- 720,000 oz in the indicated category
- 1,633,000 oz in the inferred category

Recent PEA²: @ \$1,750 USD

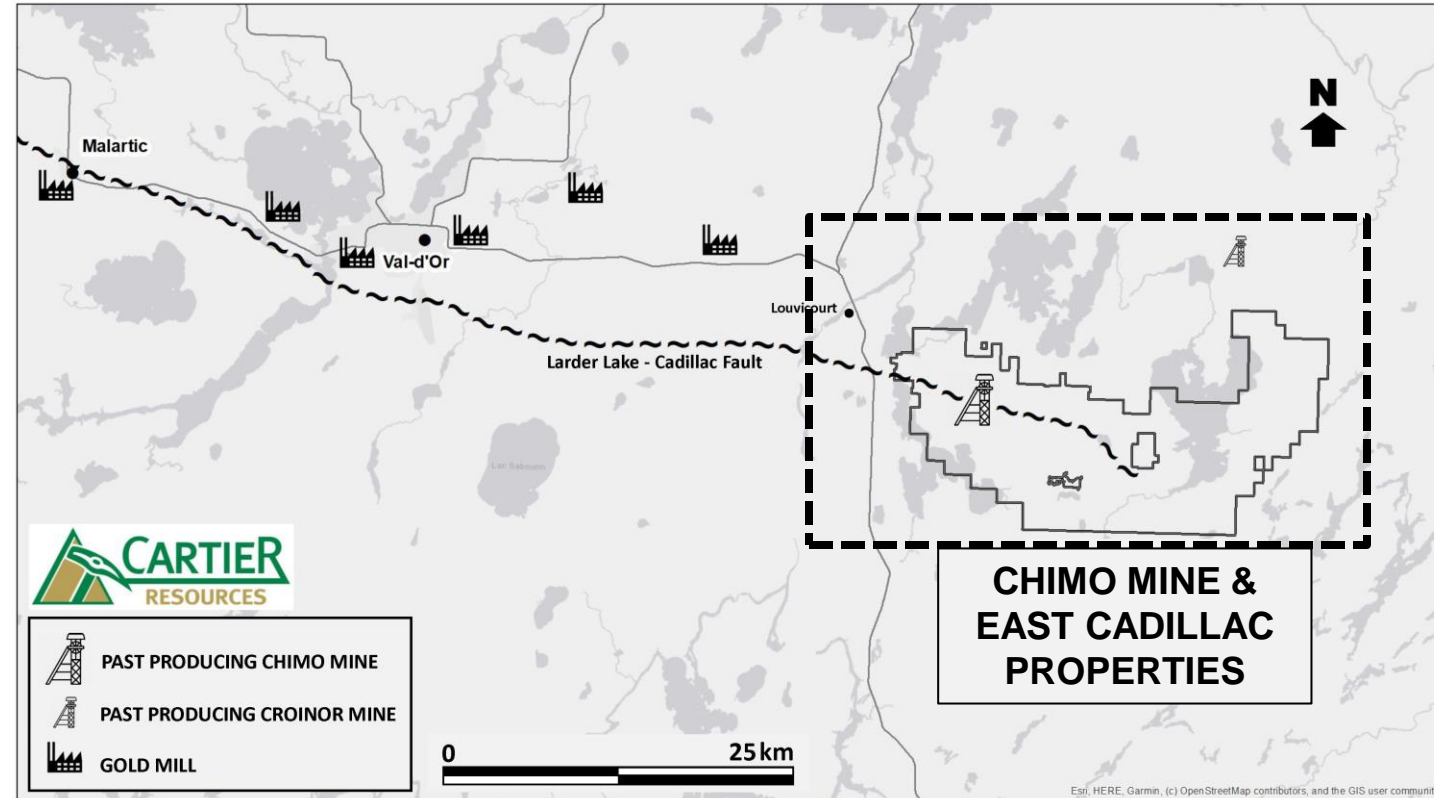
- Post-Tax NPV_{5%} 388 M\$CAD, 20.8% IRR

Advantages:

- Located in a low-risk mining-friendly region
- Key infrastructure present: power line, shaft
- Tailings management facility, etc
- Proximity of labor pool and suppliers

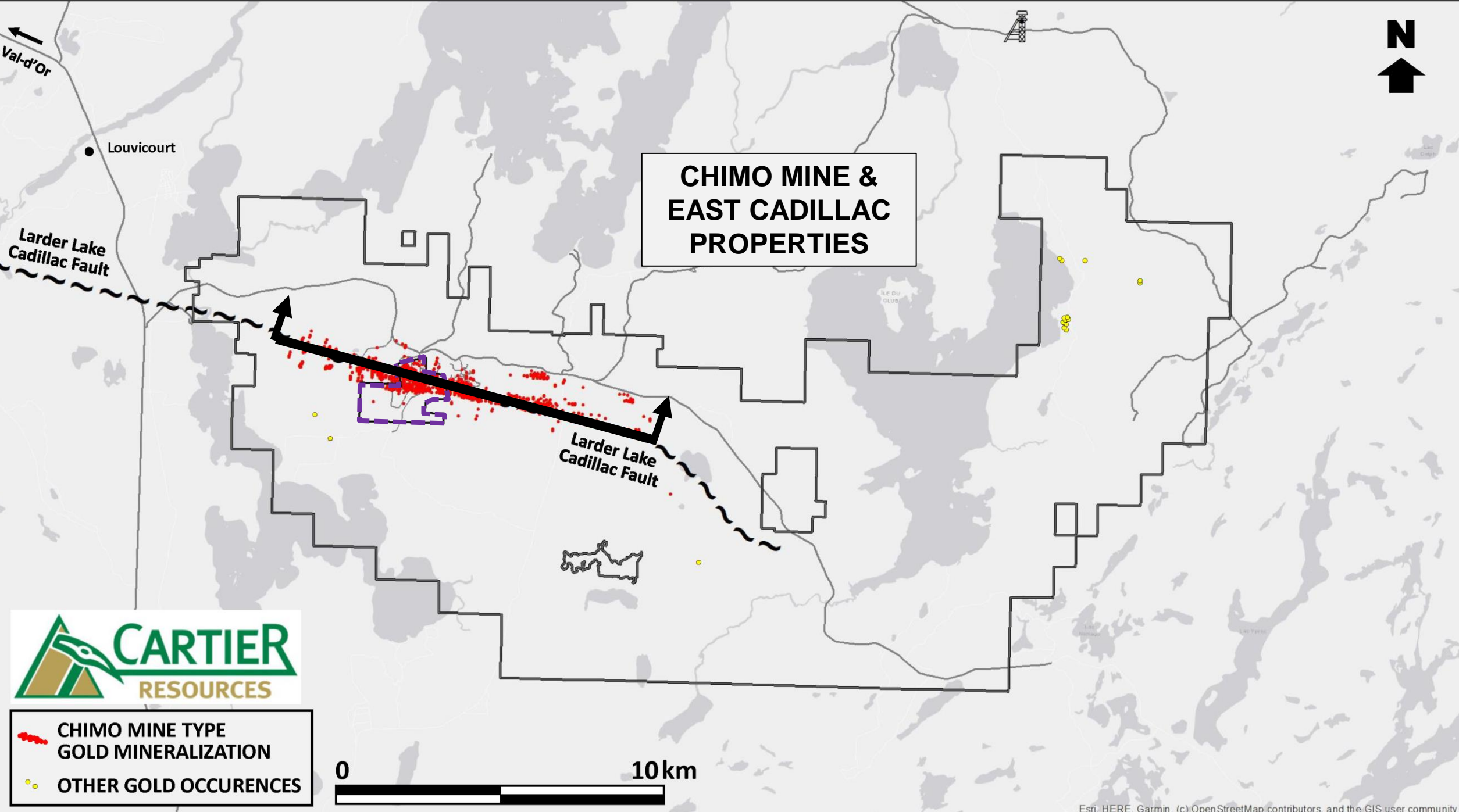
Note 1: NI 43-101 Mineral Resources Estimate for Chimo Mine and West Nordeau Gold Deposits, Québec, Canada, Vincent Nadeau-Benoit, P.Geo., Alain Carrier, P.Geo., M.Sc. and Marc R. Beauvais, P.Eng., InnovExplo Inc., August 22nd, 2022. NI 43-101 report filed on SEDAR October 13th, 2022.

Note 2: NI 43-101 Technical Report and Preliminary Economic Assessment for the Chimo Mine and West Nordeau Gold Deposits, Chimo Mine and East Cadillac Properties, Quebec, Canada, Mr. Marc R. Beauvais, P.Eng. of InnovExplo, Mr. Florent Baril of Bumigeme and Mr. Eric Sellars, P. Eng. de Responsible Mining Solutions, April 13th, 2023. NI 43-101 report filed on SEDAR May 29th, 2023.





**CHIMO MINE &
EAST CADILLAC
PROPERTIES**



-  CHIMO MINE TYPE GOLD MINERALIZATION
-  OTHER GOLD OCCURENCES





CHIMO MINE & EAST CADILLAC PROPERTIES

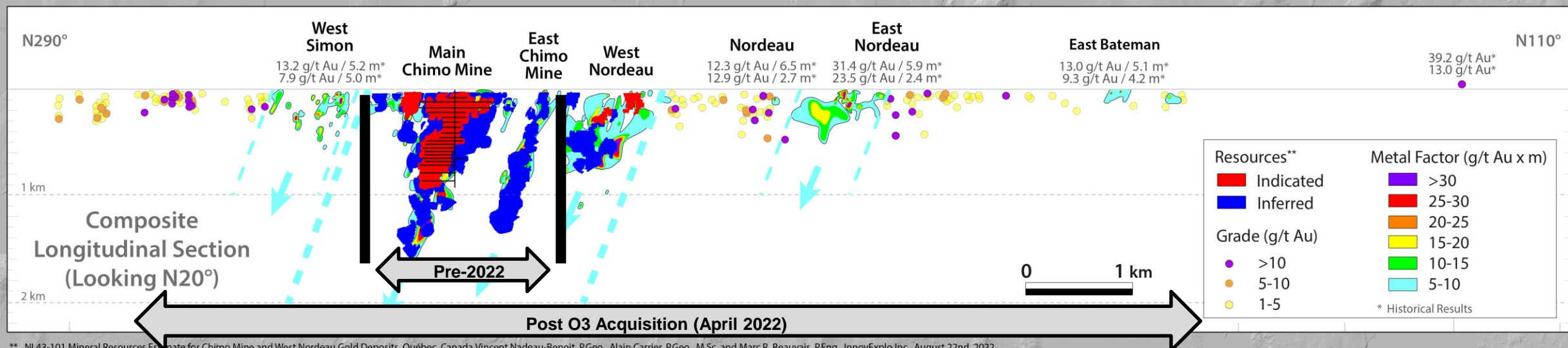
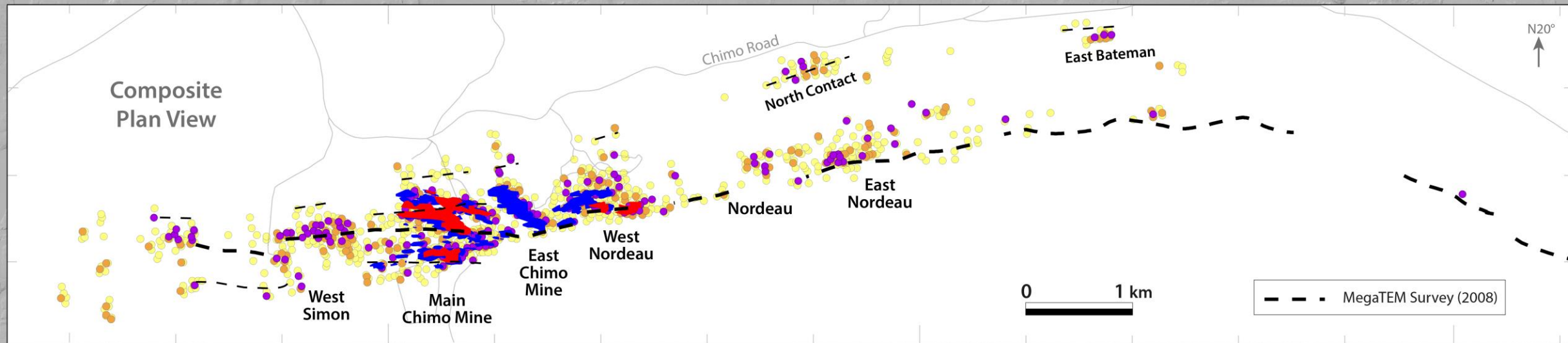
15 KM GOLD STRIKE

NPV_{5% Post-Tax} **388 M\$ CAD*****

IRR_{Post-Tax} **20.8 %*****

Indicated Resources **720,000 oz Au****

Inferred Resources **1,633,000 oz Au****



** NI 43-101 Mineral Resources Estimate for Chimo Mine and West Nordeau Gold Deposits, Québec, Canada, Vincent Nadeau-Benoit, P.Geo., Alain Carrier, P.Geo., M.Sc. and Marc R. Beauvais, P.Eng., InnovExplo Inc., August 22nd, 2022.

*** NI 43-101 Technical Report and Preliminary Economic Assessment for Chimo Mine and West Nordeau Gold Deposits, Chimo Mine and East Cadillac Properties, Québec, Canada, Marc R. Beauvais, P.Eng., of InnovExplo Inc., Mr. Florent Baril of Bumigeme and Mr. Eric Sellars, P.Eng. of Responsible Mining Solutions, May, 29th, 2023.

►► Moving Forward: Catalysts

Drilling in 2024 - projected to date:

- 174 drill holes for 28,400 meters

The program is focused on finding additional ounces proximal to current resources and infrastructure and new areas on recently acquired East Cadillac property.

Ideal 2025

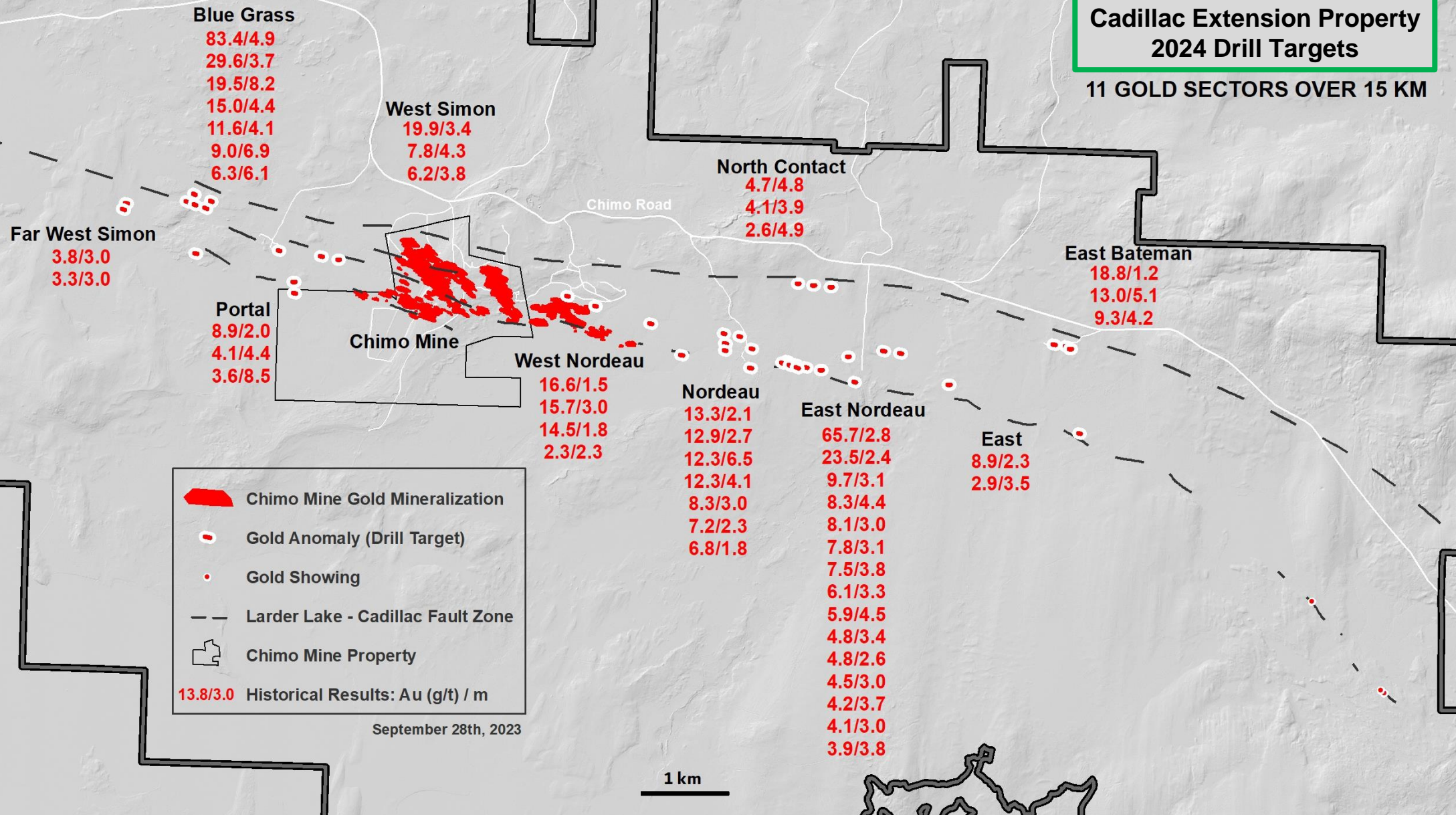
- Rate, Rank & Prioritize;
- Drill geometric extension of known gold zones;
- Update MRE and PEA





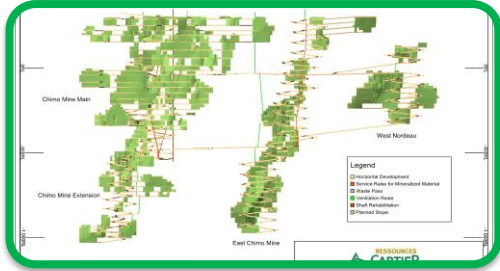
Cadillac Extension Property
2024 Drill Targets

11 GOLD SECTORS OVER 15 KM



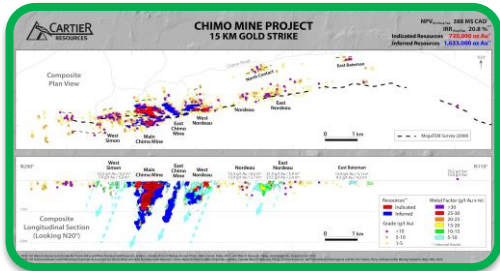


Financial Investment Highlights



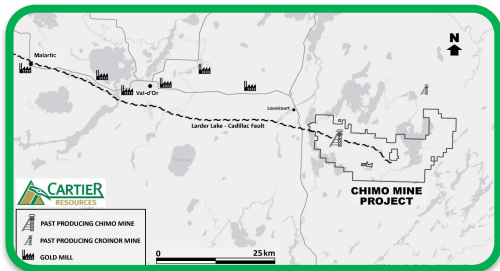
Positive Preliminary Economics at Flagship Chimo Mine Property

- Multiple opportunities to improve already positive project economics
- Carbon-Friendly gold project, higher grades via ore sorting technology
- Potential to increase resources near infrastructure



Large Land Package with Significant Resource Expansion Potential

- Hosts 15km favorable gold strike with historical discoveries open at depth and along strike
- Current sector contributing to PEA and MRE occupies 25% of favorable gold strike
- Drill-ready programs on both: PEA recommendations & 15km favorable gold strike



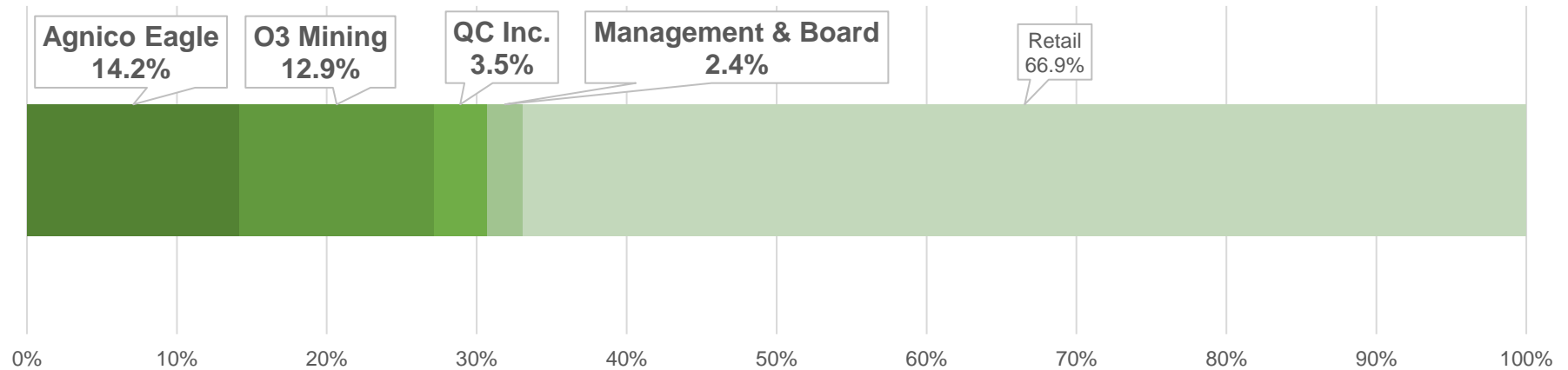
Mining-Friendly Jurisdiction with Proximity to Supporting Infrastructure

- Pathway to production with reduction of risk and upfront capital
- Potential toll milling scenario
- Access to qualified workforce



Capital Structure, Key Financials, Value Proposition

Share Structure



Key Financials

Market Cap: \$28.1M

Cash: \$2.9M

Recent Share Price: \$0.08

Value Proposition

NPV / Shares issued: \$1.10

EV / oz Au: \$10

M&A Price Paid / oz Au*: \$98 (\$0.65/share)



Contact Information

Philippe Cloutier, P.GEO

President, CEO & Director

Email: philippe.cloutier@ressourcescartier.com

Phone: 877-874-1331

Mobile: 819-856-0512

Cartier Resources

1740, chemin Sullivan, suite 1000

Val-d'Or (Québec) J9P 7H1



Chimo mine Visible Gold Sample from Zone 5B, Level 17, 108.4 g /t Au / 2.0 m Courtesy of Tony Brisson, Geologist, 1995