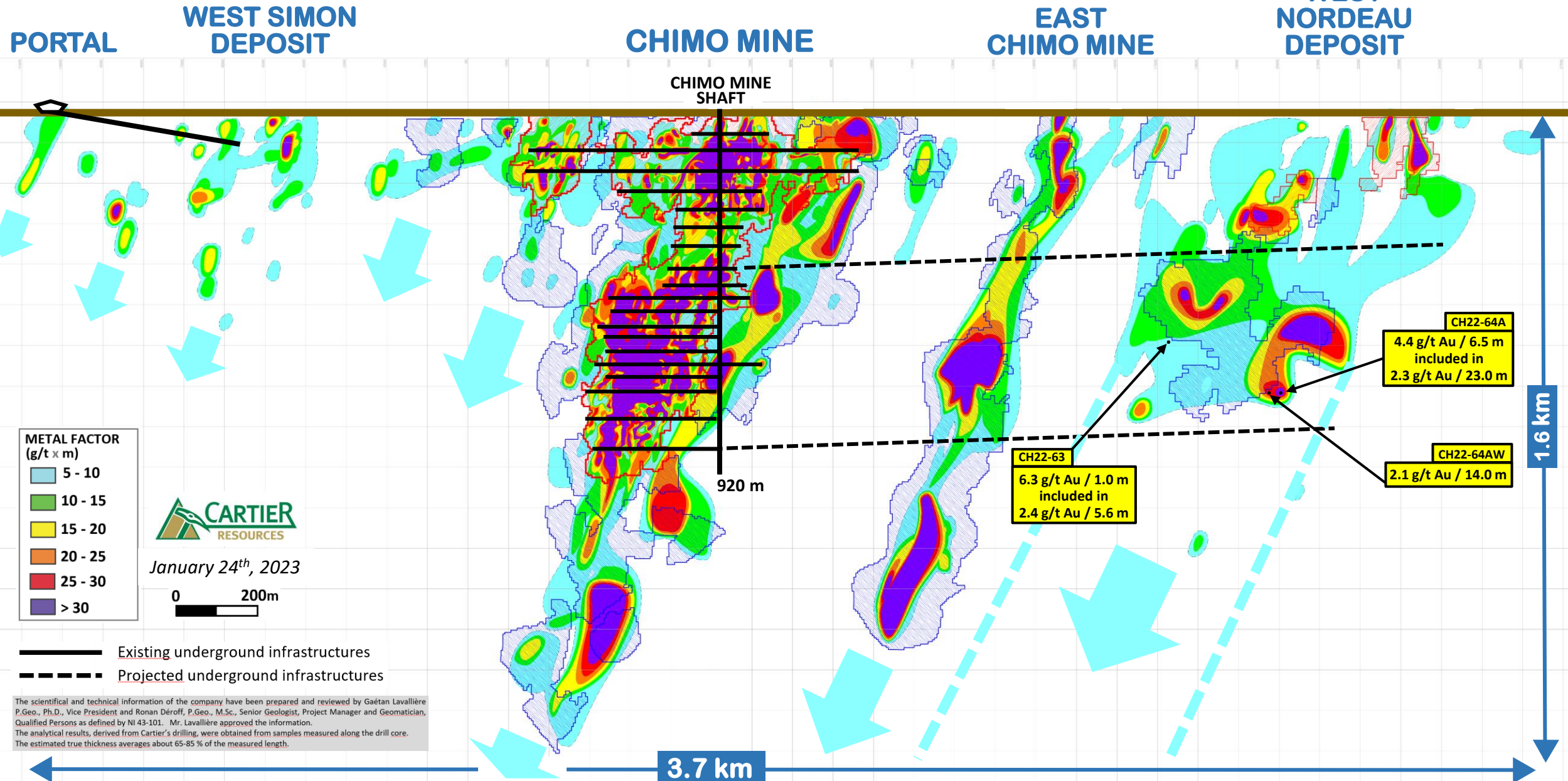


WEST

EAST

CHIMO MINE GOLD SYSTEM LONGITUDINAL COMPOSITE SECTION (Looking North)



The scientific and technical information of the company have been prepared and reviewed by Gaétan Lavallière P.Geo., Ph.D., Vice President and Ronan Déroff, P.Geo., M.Sc., Senior Geologist, Project Manager and Geomatician, Qualified Persons as defined by NI 43-101. Mr. Lavallière approved the information. The analytical results, derived from Cartier's drilling, were obtained from samples measured along the drill core. The estimated true thickness averages about 65-85 % of the measured length.