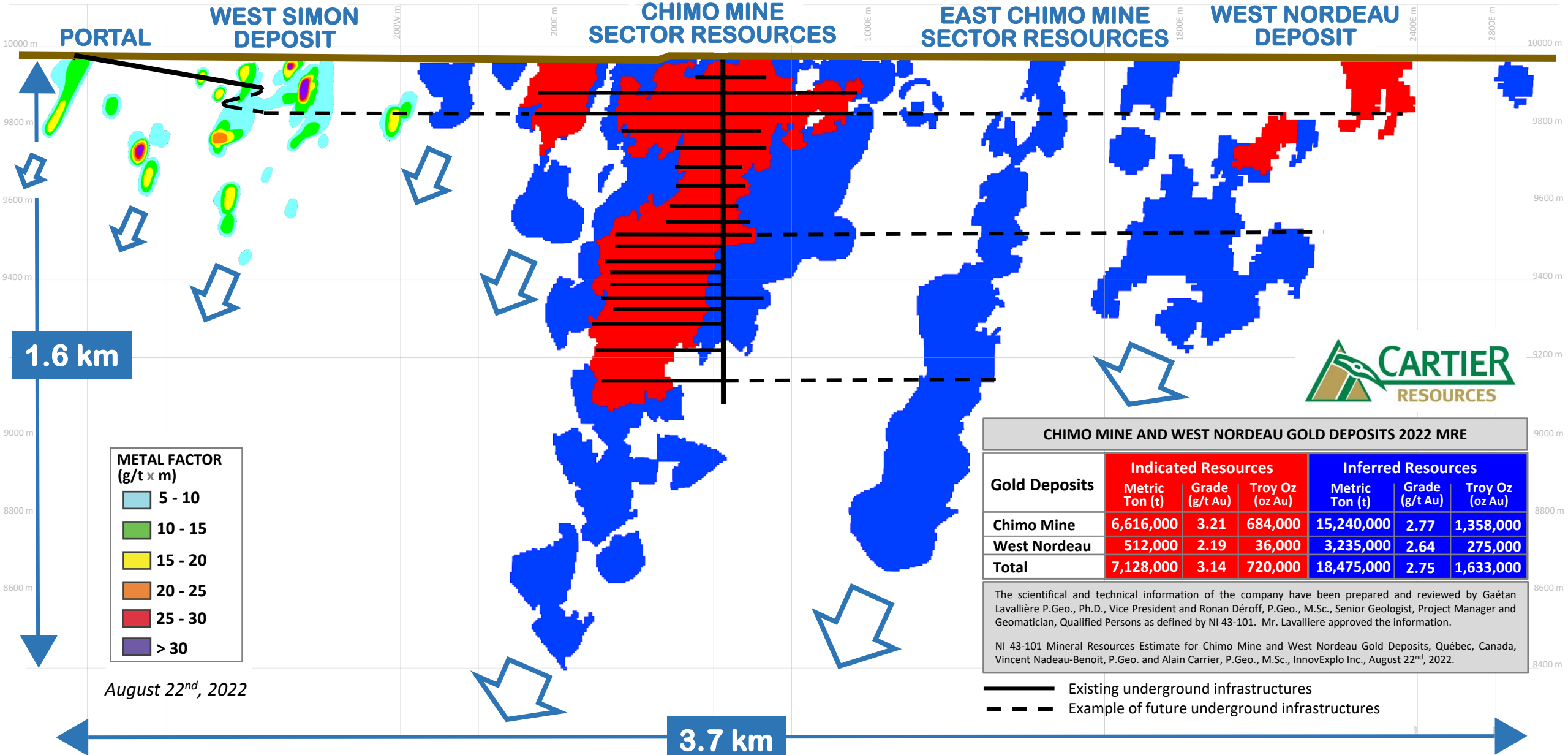


WEST

EAST

# CHIMO MINE GOLD SYSTEM LONGITUDINAL COMPOSITE SECTION



CHIMO MINE AND WEST NORDEAU GOLD DEPOSITS 2022 MRE

Gold Deposits	Indicated Resources			Inferred Resources		
	Metric Ton (t)	Grade (g/t Au)	Troy Oz (oz Au)	Metric Ton (t)	Grade (g/t Au)	Troy Oz (oz Au)
Chimo Mine	6,616,000	3.21	684,000	15,240,000	2.77	1,358,000
West Nordeau	512,000	2.19	36,000	3,235,000	2.64	275,000
<b>Total</b>	<b>7,128,000</b>	<b>3.14</b>	<b>720,000</b>	<b>18,475,000</b>	<b>2.75</b>	<b>1,633,000</b>

The scientific and technical information of the company have been prepared and reviewed by Gaétan Lavallière P.Geo., Ph.D., Vice President and Ronan Déroff, P.Geo., M.Sc., Senior Geologist, Project Manager and Geomatician, Qualified Persons as defined by NI 43-101. Mr. Lavallière approved the information.

NI 43-101 Mineral Resources Estimate for Chimo Mine and West Nordeau Gold Deposits, Québec, Canada, Vincent Nadeau-Benoit, P.Geo. and Alain Carrier, P.Geo., M.Sc., InnovExplo Inc., August 22<sup>nd</sup>, 2022.

— Existing underground infrastructures  
 - - - Example of future underground infrastructures

August 22<sup>nd</sup>, 2022

