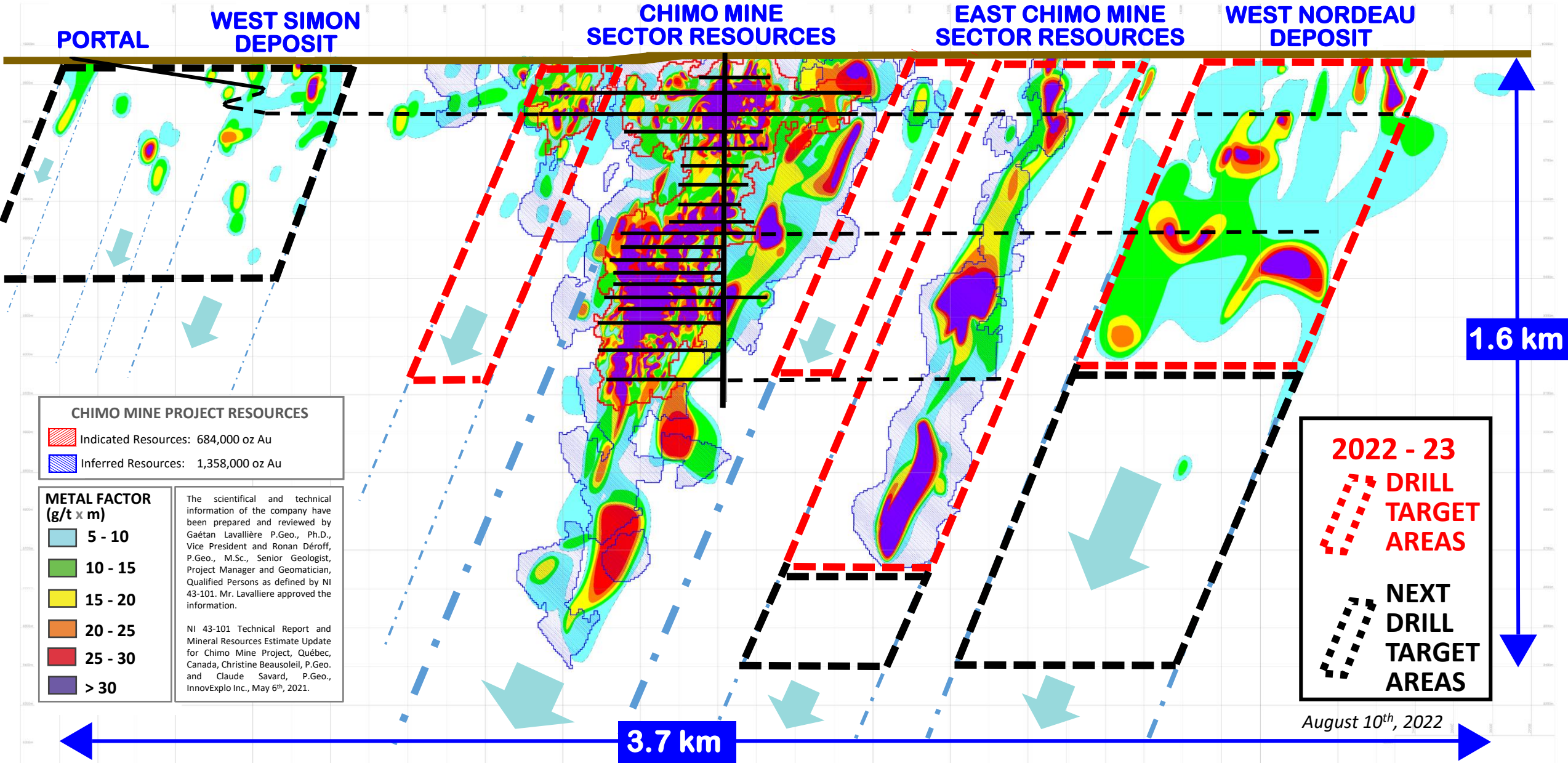


WEST

EAST

CHIMO MINE GOLD SYSTEM

LONGITUDINAL COMPOSITE SECTION



PORTAL

WEST SIMON DEPOSIT

CHIMO MINE SECTOR RESOURCES

EAST CHIMO MINE SECTOR RESOURCES

WEST NORDEAU DEPOSIT

CHIMO MINE PROJECT RESOURCES

- Indicated Resources: 684,000 oz Au
- Inferred Resources: 1,358,000 oz Au

METAL FACTOR (g/t x m)

- 5 - 10
- 10 - 15
- 15 - 20
- 20 - 25
- 25 - 30
- > 30

The scientific and technical information of the company have been prepared and reviewed by Gaétan Lavallière P.Geo., Ph.D., Vice President and Ronan Déroff, P.Geo., M.Sc., Senior Geologist, Project Manager and Geomatician, Qualified Persons as defined by NI 43-101. Mr. Lavallière approved the information.

NI 43-101 Technical Report and Mineral Resources Estimate Update for Chimo Mine Project, Québec, Canada, Christine Beausoleil, P.Geo. and Claude Savard, P.Geo., InnovExplo Inc., May 6th, 2021.

2022 - 23 DRILL TARGET AREAS

NEXT DRILL TARGET AREAS

1.6 km

3.7 km

August 10th, 2022