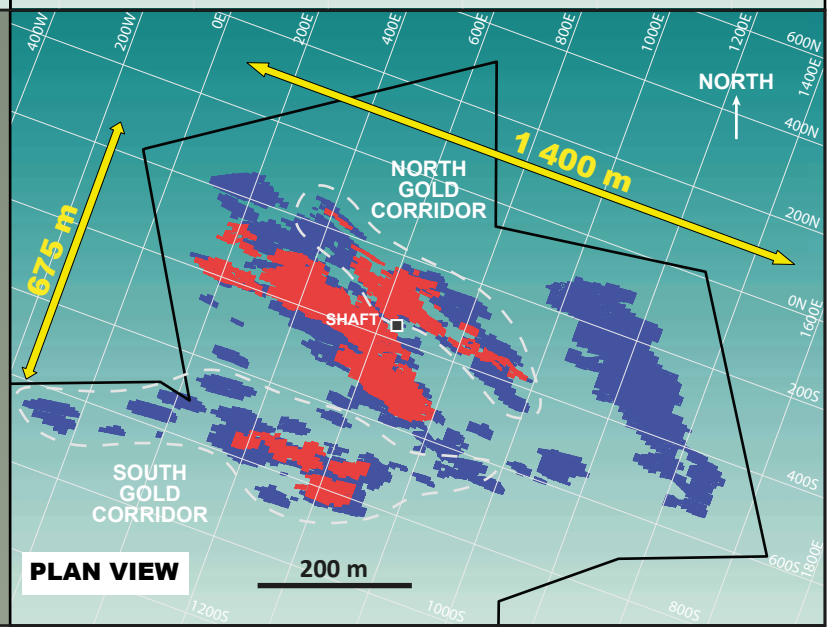


Source	Gold Corridor	Cut-Off Grade (g/t Au)	Indicated Resources			Inferred Resources		
			Metric Ton (t)	Grade (g/t Au)	Troy Ounce (oz Au)	Metric Ton (t)	Grade (g/t Au)	Troy Ounce (oz Au)
InnovExplo Inc., 2021	North	2.0	1,119,000	3.85	139,000	1,563,000	3.54	178,000
	Central	1.5	5,053,000	3.03	493,000	11,728,000	2.55	963,000
	South	2.0	444,000	3.61	52,000	1,949,000	3.47	217,000
	Total		6,616,000	3.21	684,000	15,240,000	2.77	1,358,000



The scientific and technical information of the company have been prepared and reviewed by MM. Gaétan Lavallière, P. Geo., Ph.D., Vice President and Ronan Déroff, P. Geo, M.Sc., Senior Geologist, Project Manager and Geomatician, Qualified Persons as defined by NI 43-101. Mr. Lavallière approved the information. All figures are presented in composite view. Cartier Increases Gold Resources at Chimo Mine Property to 684,000 oz Indicated and 1,358,000 oz Inferred. InnovExplo Inc., March 23rd, 2021.