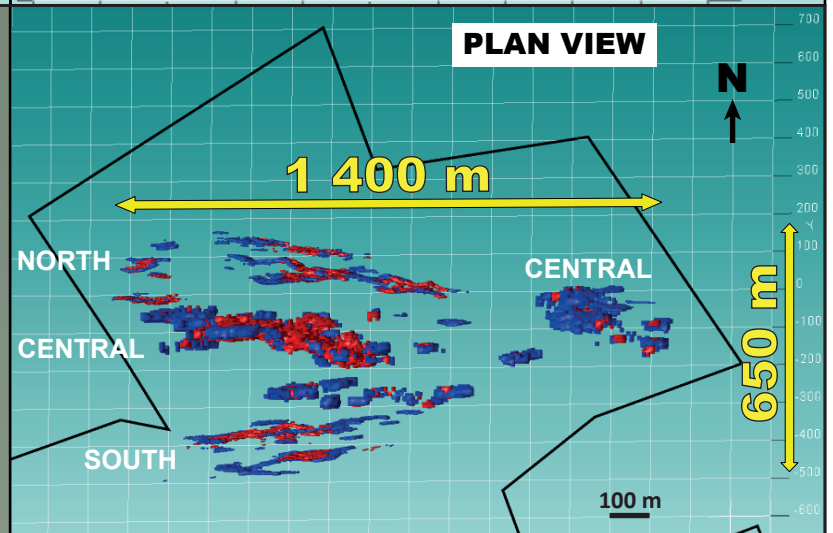


Source	Gold Corridor	Cut-Off Grade (g/t Au)	Indicated Resource			Inferred Resource		
			Metric Ton (t)	Grade (g/t Au)	Troy Ounce (oz)	Metric Ton (t)	Grade (g/t Au)	Troy Ounce (oz)
InnovExplo Inc. ² (2020)	North	2.5	505 300	5.35	86 850	715 700	4.59	105 710
GéoPointCom Inc. ¹ (2019)	Central	2.5	3 263 300	4.40	461 280	3 681 600	3.53	417 250
InnovExplo Inc. ² (2020)	South	2.5	249 000	4.63	37 060	480 600	4.84	74 840
	Total	2.5	4 017 600	4.53	585 190	4 877 900	3.82	597 800



The scientific and technical information of the company have been prepared and reviewed by MM. Gaétan Lavallière, P. Geo., Ph.D., Vice President and Ronan Déroff, P. Geo, M.Sc., Senior Geologist, Project Manager and Geomatician, Qualified Persons as defined by NI 43-101. Mr. Lavallière approved the information. The analytical results, derived from Cartier's drilling, were obtained from samples measured along the drill core. The estimated true thickness averages about 65-85 % of the measured length.

1: NI 43-101 Technical Report and Mineral Resource Estimate, Chimo Mine Project, Central Gold Corridor, Val-d'Or, Québec, Canada. GéoPointCom Inc., December 17th, 2019.

2: NI 43-101 Technical Report and Mineral Resource Estimate for the Central, North and South Gold Corridors on the Chimo Mine Project, Québec, Canada. InnovExplo Inc., June 16th, 2020.