

Indicated Resource			
Cut Off Grade (g/t Au)	Metric Ton (t)	Grade (g/t Au)	Troy Ounce (oz)
2.5	3 263 300	4.40	461 280

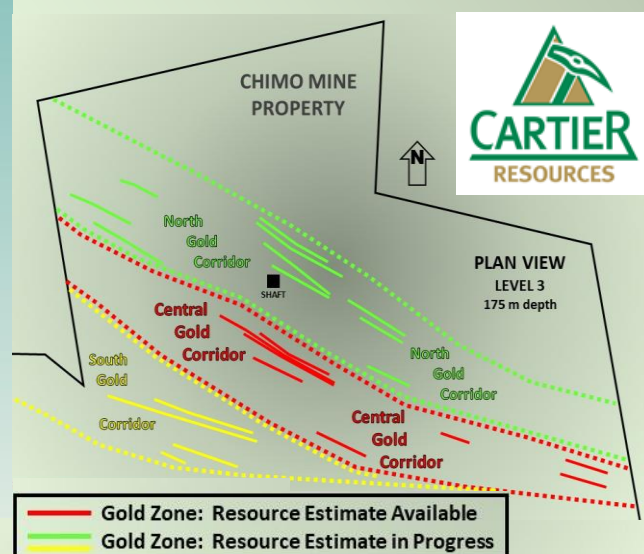
Inferred Resource			
Cut Off Grade (g/t Au)	Metric Ton (t)	Grade (g/t Au)	Troy Ounce (oz)
2.5	3 681 600	3.53	417 250

<b>INDICATED RESOURCE</b>	<b>INFERRED RESOURCE</b>
-------------------------------	------------------------------

\* NI 43-101 Technical Report and Mineral Resource Estimate, Chimo Mine Project, Central Gold Corridor, Val-d'Or, Québec, Canada, December 17<sup>th</sup>, 2019.

# CHIMO MINE PROJECT

## Central Gold Corridor



The scientific and technical information of the Company, have been prepared and reviewed by MM. Gaétan Lavallière, P. Geo., Ph.D., Vice President and Ronan Déroff, P. Geo, M.Sc. Senior Geologist, Project Manager and Geomatician, Qualified Persons as defined by NI 43-101. Mr. Lavallière approved the information. The analytical results, derived from Cartier's drilling, were obtained from samples measured along the drill core. The estimated true thickness averages about 65-80% of the measured length. February 18<sup>th</sup>, 2020.