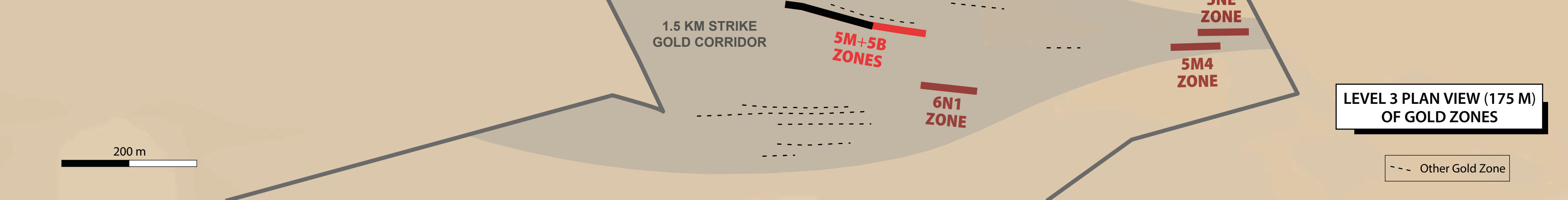


Quality Assurance / Quality Control
 The scientific and technical information has been reviewed and approved by Mr. Gaétan Lavallière, P. Geo, Ph. D. and Vice-President for Cartier Resources. Mr. Lavallière is a qualified person as defined by National Instrument 43-101.
 All the drill hole results are measured along the core axis.
 Ronan Déroff, P. Geo., M. Sc.: Senior Geologist - Project Manager - Geomatician

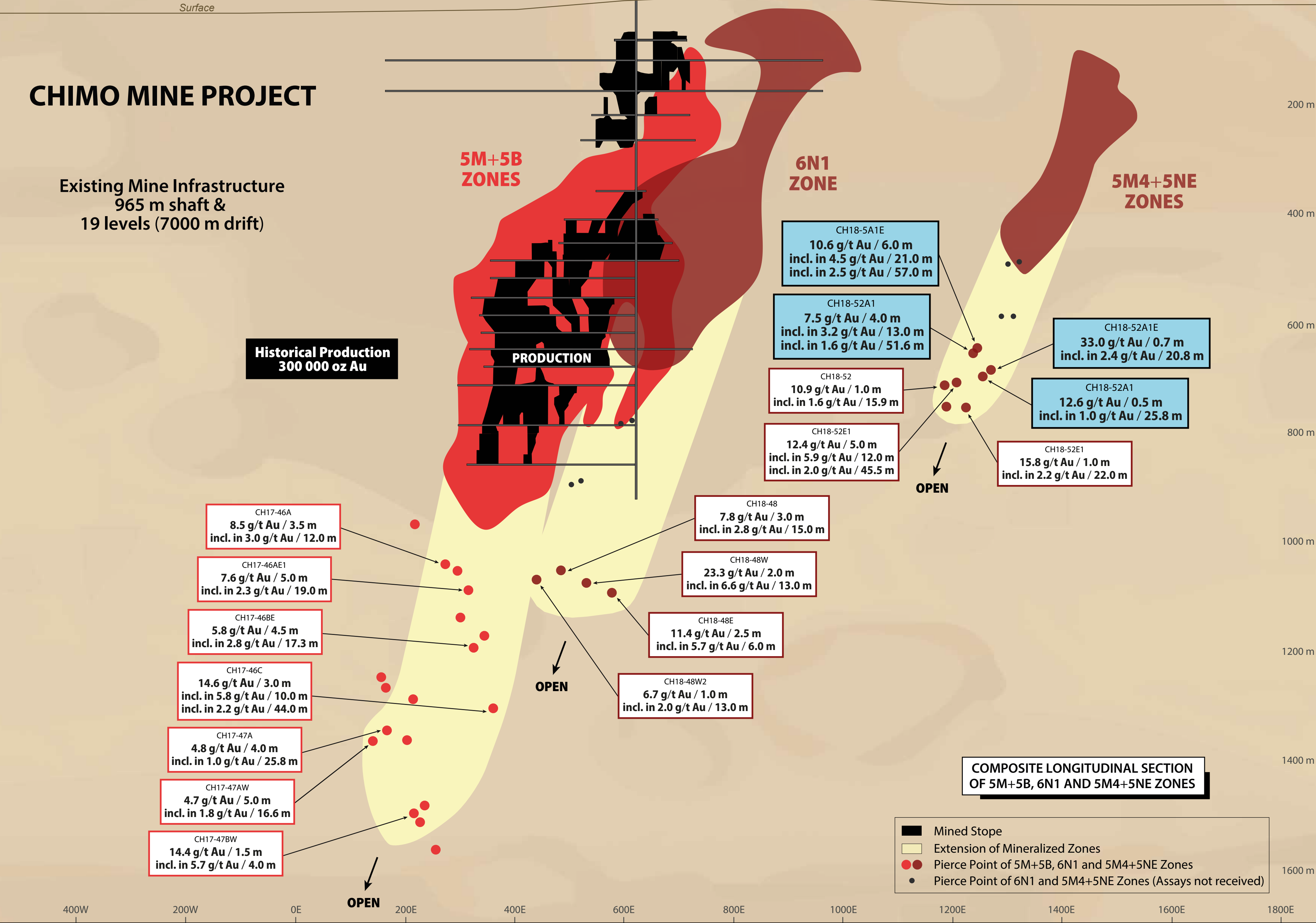


WEST EAST

CHIMO MINE PROJECT

Existing Mine Infrastructure
 965 m shaft &
 19 levels (7000 m drift)

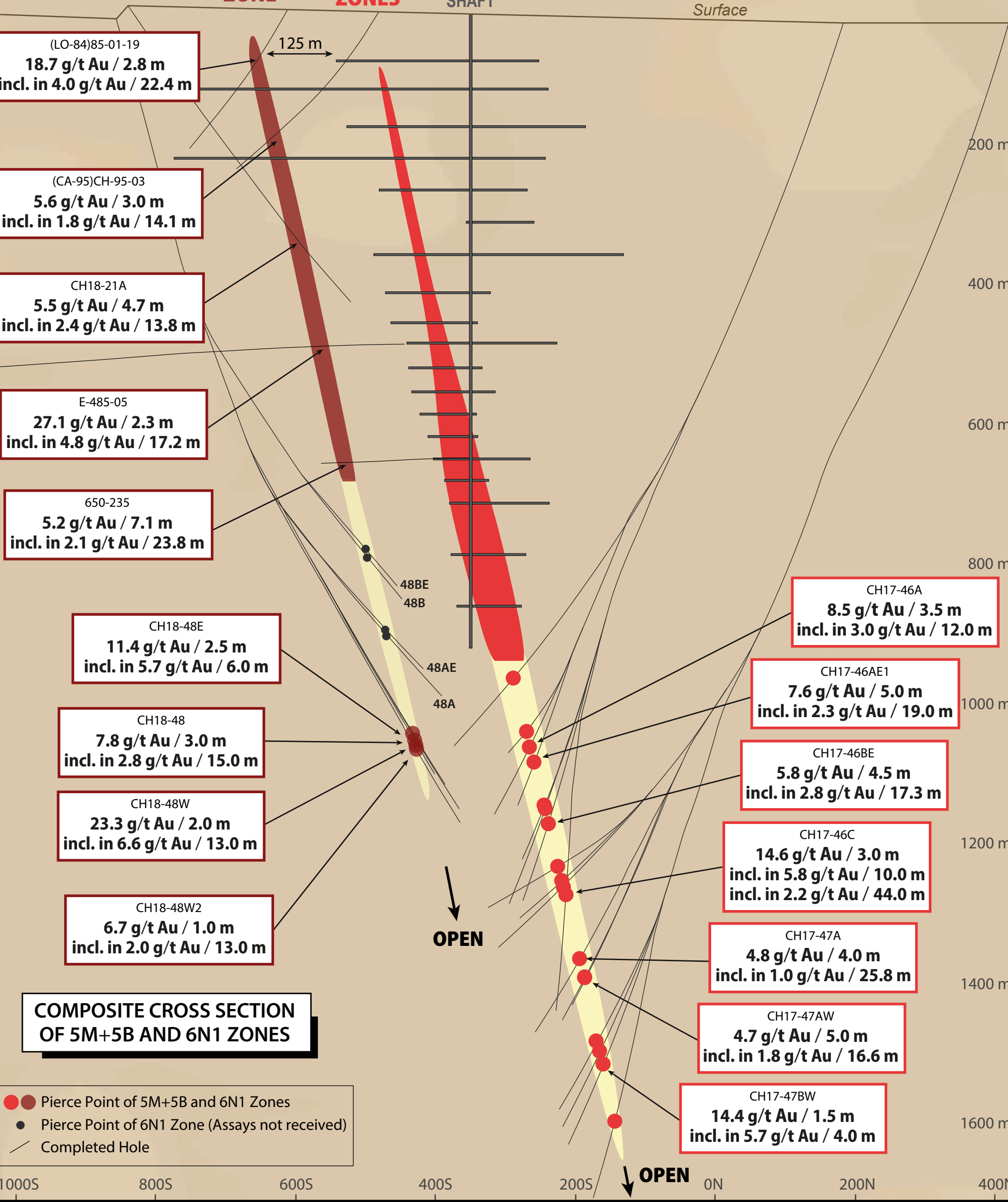
Historical Production
 300 000 oz Au



COMPOSITE LONGITUDINAL SECTION OF 5M+5B, 6N1 AND 5M4+5NE ZONES

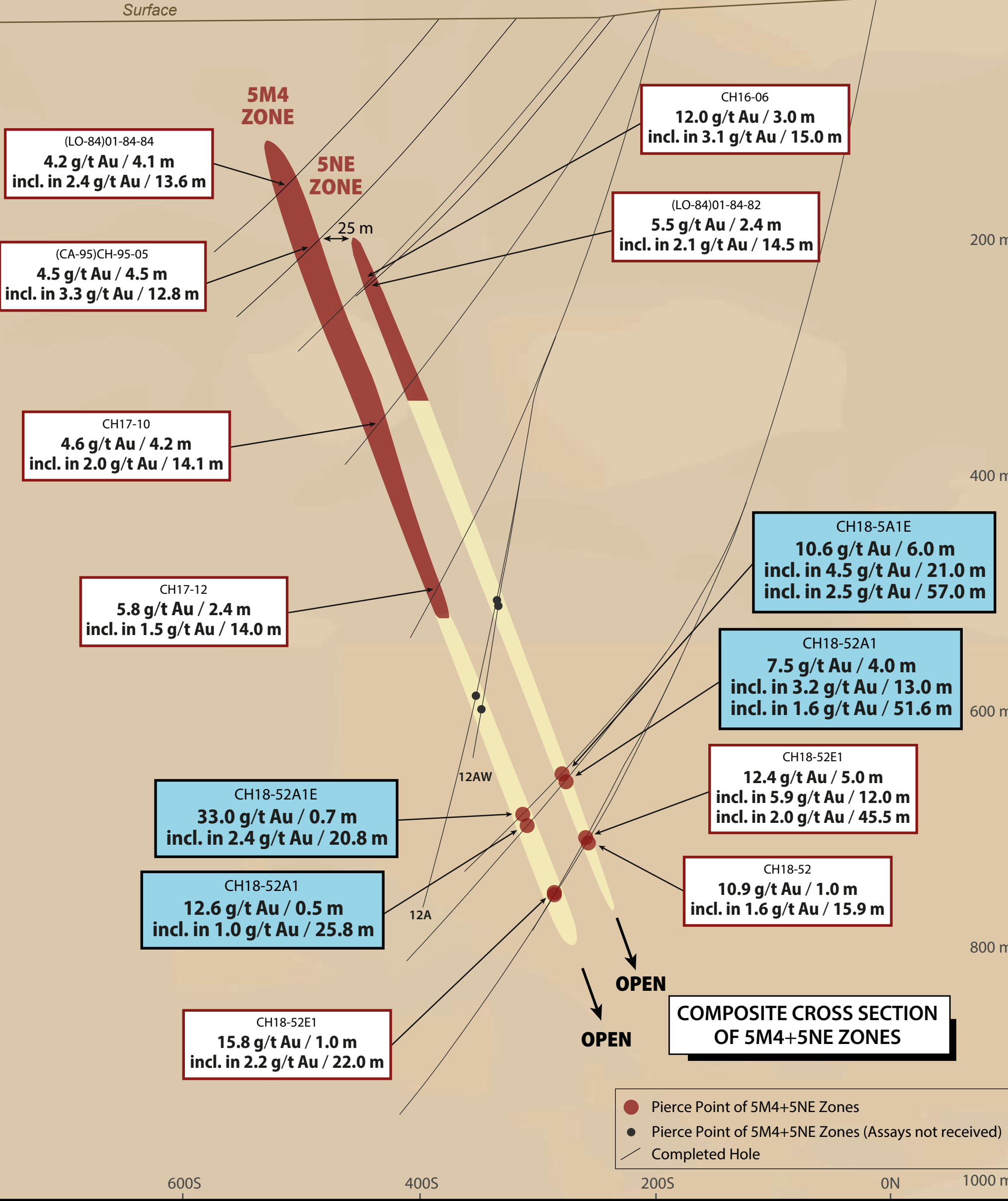
- Mined Stope
- Extension of Mineralized Zones
- Pierce Point of 5M+5B, 6N1 and 5M4+5NE Zones
- Pierce Point of 6N1 and 5M4+5NE Zones (Assays not received)

SOUTH NORTH SOUTH NORTH



COMPOSITE CROSS SECTION OF 5M+5B AND 6N1 ZONES

- Pierce Point of 5M+5B and 6N1 Zones
- Pierce Point of 6N1 Zone (Assays not received)
- Completed Hole



COMPOSITE CROSS SECTION OF 5M4+5NE ZONES

- Pierce Point of 5M4+5NE Zones
- Pierce Point of 5M4+5NE Zones (Assays not received)
- Completed Hole